



# **Refrigerator**

# **N1152 Series**

## **Owner's Manual**

**p/n 640254 Rev A**  
**3/15/2019**

# EN Original User Manual

## Contents

1. Introduction	2
2. Symbols	3
3. Safety	3
4. Main components	5
5. Before use	5
6. Switching on the refrigerator	6
7. Selecting cooling level	6
8. Selecting night mode	7
9. Use of the refrigerator compartment	8
10. Use of the freezer compartment	10
11. While driving	10
12. Maintenance and cleaning	11
13. Switching off the refrigerator	13
14. Defrosting	13
15. Troubleshooting	14
16. Storage	15
17. Servicing	16
18. Technical specifications	16
20. Disposal	16
21. Questions	17
22. Warranty	17

## 1. Introduction

This is the user manual for your Norcold refrigerator. Read the safety instructions and information on use and maintenance of the refrigerator carefully before continuing. This will enable you to use the refrigerator safely and efficiently. Retain this manual for future reference.

[For the latest version of this manual, please visit www.Norcold.com.](http://www.Norcold.com)

## 2. Symbols

Key to symbols:



**Warning.** Risk of serious injury and/or damage.



**Caution.** Risk of injury and/or damage.



**Attention.** Important information.



**Note.** Information.

EN

## 3. Safety



This appliance is not intended for use by persons (including children) with reduced physical, sensory or mental capabilities and/or lack of experience and knowledge only if they are supervised or have been given instructions on the safe use of this appliance by a person responsible for their safety.



Children should be supervised to ensure that they do not play with the appliance.



**DANGER:** Risk of child entrapment. Before you throw away your old refrigerator or freezer:

\*Take off the doors.

\*Leave the shelves in place so that children may not easily climb inside.



**DANGER:** Do not allow children to clean or maintain this equipment unattended.



Use only parts supplied by the manufacturer.



Do not change or adjust anything on the appliance, unless the change is authorized by the manufacturer or its representative.



If the supply cord is damaged, it must be replaced by the manufacturer, its service agent or similarly qualified person to avoid a hazard.



The refrigerant is R-290 or R600a and insulation blowing gases is cyclopentane, servicing and disposal of appliance should be done by qualified person.



Use the appliance for cooling and freezing only and not for anything else. Follow the instructions in this manual. The manufacturer cannot be held liable for damage resulting from improper use or incorrect setting of the controls. If the instructions have not been followed, warranty claims will not be accepted.



This appliance is designed for 12V DC supply voltage. Do not attempt to run the refrigerator on any other voltage or means of supply.



Build-up of dust on the condenser will reduce the performance of the appliance and increase the risk of overheating of the cooling system. Have the condenser and cooling fan cleaned by qualified service personnel if you

suspect poor performance.



Never open or damage the refrigerant circuit of the cooling system at the back or on the inside of your appliance. The cooling system is pressurized and contains flammable substances.



**WARNING:** Do not use electrical appliances inside the food storage compartments of the appliance, unless they are the type recommended by the manufacturer.



Do not store explosive substances such as aerosol cans with a flammable propellant in this appliance.



The maximum load of the large shelf is 26 lbs. and the maximum load of the small shelf is 13 lbs.



Never expose the appliance to moisture.



Keep ventilation openings, in the appliance enclosure or in the built-in structure, clear of obstruction.



Do not use mechanical devices or other means to accelerate the defrosting process, other than those recommended by the manufacturer.



**WARNING:** Do not damage the refrigerant circuit.

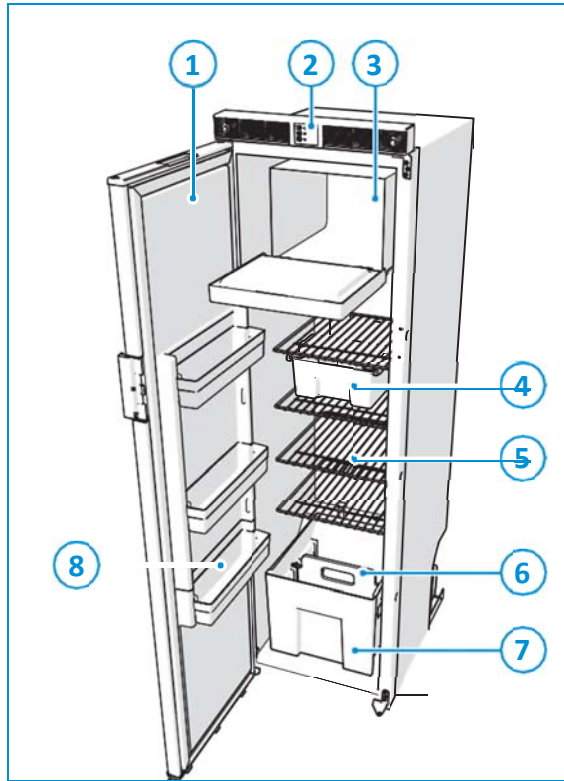


This refrigerator is intended for use in mobile leisure vehicles.



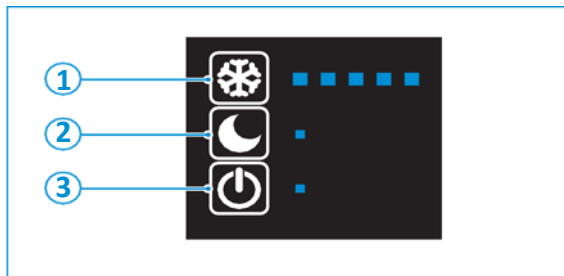
As the constant regulation of temperature cannot be guaranteed, the refrigerator might not be suitable for proper storage of medications. Refer to the instructions included with the medications.

## 4. Main components



1. Refrigerator door
2. Control panel
3. Freezer compartment
4. Slide-out box
5. Storage shelves
6. Bottle retainer
7. Vegetable bin
8. Door bins

### Control panel



1. Temperature setting button
2. Night mode button
3. On/off button

## 5. Before use

Before using the appliance:

- Ensure that all packaging materials have been removed.
- Clean the inside of the refrigerator properly with warm water and household

detergent and dry carefully with a soft cloth.

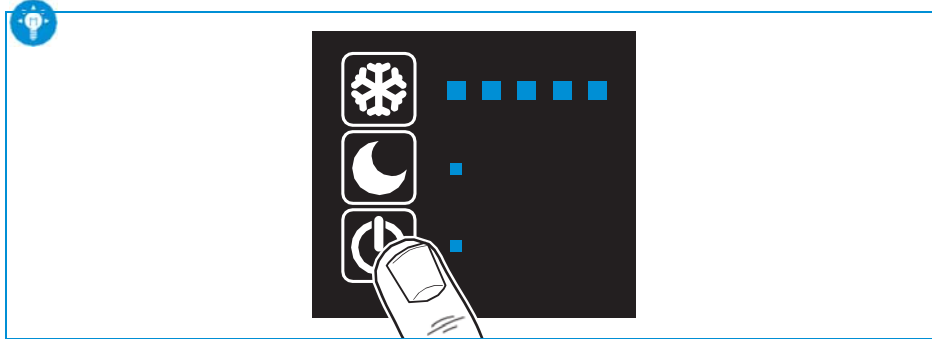
- Ensure that the DC electricity supply is connected and turned on.

## 6. Switching on the refrigerator

EN

To switch on the refrigerator:

- Push the on/off button and hold it for 2 seconds.



The refrigerator is powered from the 12V battery.



After 10 seconds the temperature setting indication will dim. The blue light indicates the refrigerator is still in function.

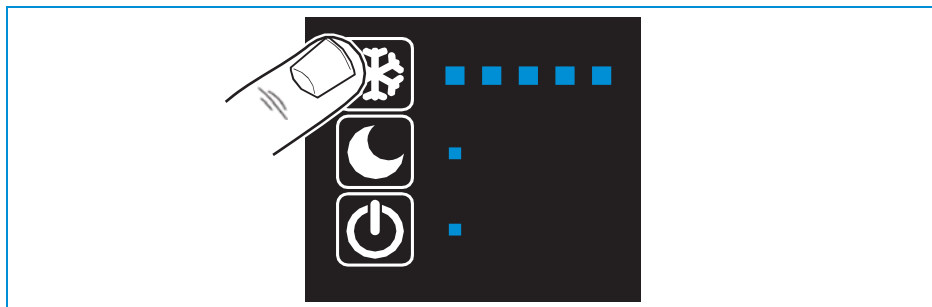


For optimal performance, switch on the refrigerator 4 hours before placing food.

## 7. Selecting cooling level

To select the cooling level:

- Push the temperature setting button and hold it for 1 second.
- Tap the button again to select the desired cooling level (1 to 5).



After the temperature setting button is activated, you can also select the cooling level by holding the button.

Norcold advises to set the refrigerator on cooling level 3, with an ambient temperature between 16°C (61°F) and 25°C (77°F). A higher temperature needs

- i a higher cooling level, a lower temperature a lower level.
   
i Your refrigerator meets different types of climate classes at different levels of the ambient temperature.

**Table 1: Climate classes**

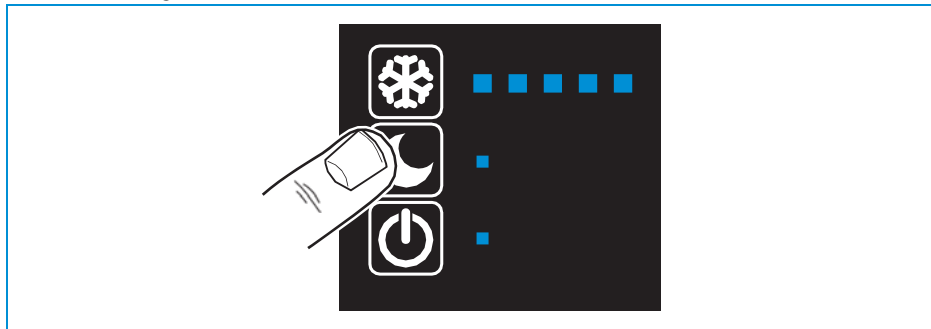
Mode 1	N1152
Climate class day mode	T 16°C(61°F) to 43°C(110°F)
Climate class night mode	N 16°C(61°F) to 32°C(89°F)

- i Active running time of the refrigerator depends on the temperature, size and state of the battery, electrical load of other devices in the vehicle, content of the refrigerator and frequency of use.
- i When the vehicle is exposed to full sun light, it is strongly recommended to apply proper ventilation in the vehicle.

## 8. Selecting night mode

The blue light indicates the night mode is activated. When the night mode is activated, the cooling unit will run at low speed, so noise and power consumption are reduced to the minimum. To select the night mode:

- Push the night mode button.



EN

- i Use night modus only when temperatures in the vehicle are below 30°C (86°F). Do not forget to switch off the night modus, when temperatures exceed 30°C (86°F).

## 9. Use of the refrigerator compartment

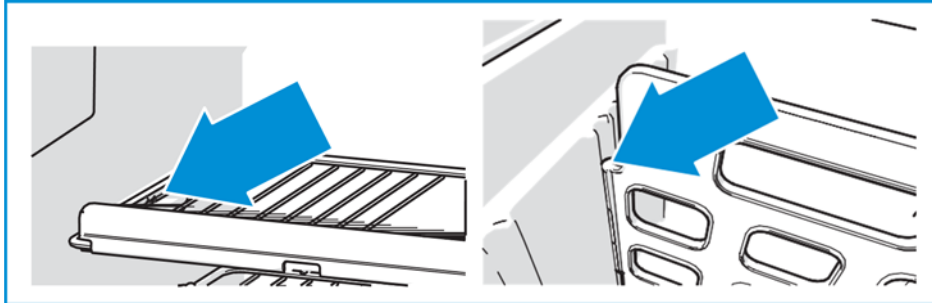
To organize your refrigerator as desired, move the storage shelves and door bins in height.

### Moving the storage shelves

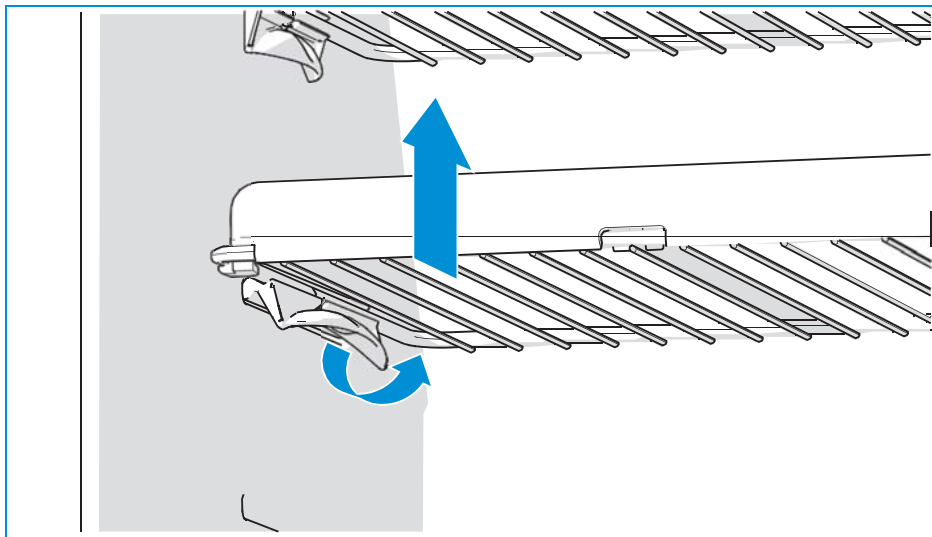
A number of shelves are secured to prevent inadvertent entrapment and possible suffocation of children. For the same reason, the bottle retainer is fixed to the drawer.

 Do not remove the fixed shelves or bottle retainer, so children have no space to be entrapped in the refrigerator.

If it is necessary to move a fixed shelf, undo the screws that are placed in the shelf near the shelf clamps. Remove the fixed bottle retainer in the same way.



- Turn the plastic clamps of the storage shelf upwards.
- Lift that side a bit.



- Move the storage shelf to the desired position.

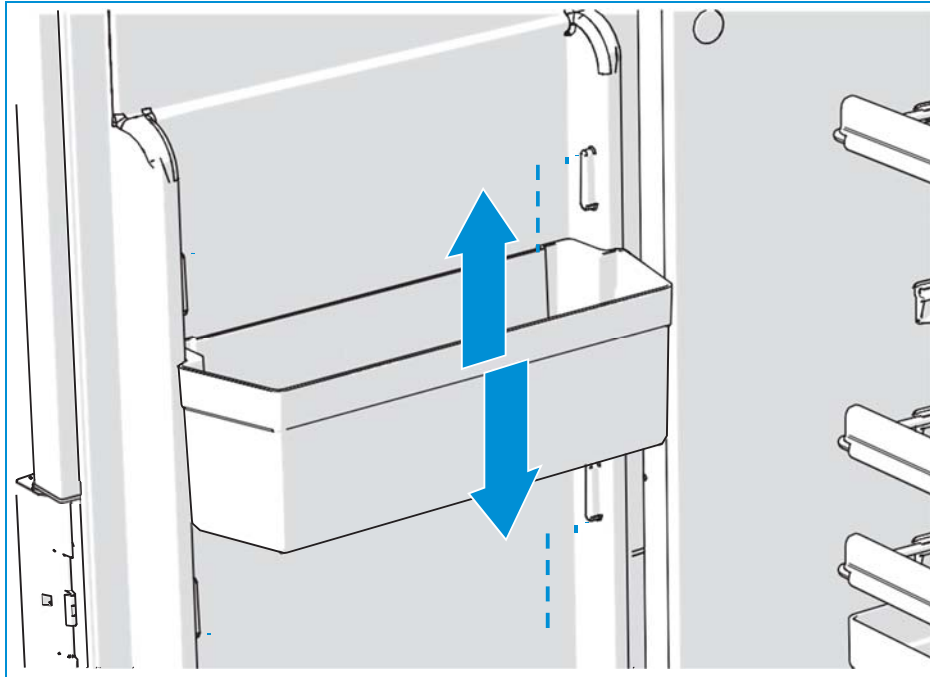


- Place the left side of the storage shelf without the clamp in the refrigerator wall.
- Place the other side in the corresponding groove.
- Turn the plastic clamp downwards.
- Replace the screws after you have finished.

**i** The maximum storage capacity of the drawer is 33 lbs.

### Moving the door bins

- Push the door bin out of the lock with both hands.
- Place the door bin back in the desired position.

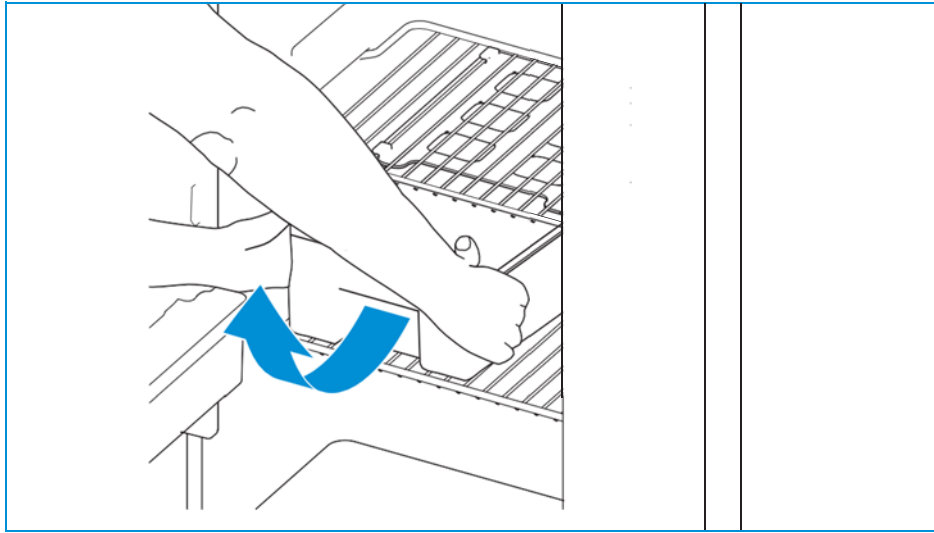


- Push the door bin back on the lock.

**i** Ensure that the door can still be closed after reorganizing shelves and bins.  
 To prevent your refrigerator from ice formation, always cover liquid products, let warm products cool down before placing them and do not open the door any longer than necessary.

You may use the slide-out box as a tray for all your breakfast or lunch items. Slide out the complete box and put it directly on the table. To remove the slide-out box:

- Pull the box until the stop.
- Then lift the box at the front, as illustrated.



- The box is now free to remove.

## 10. Use of the freezer compartment

- Use the freezer compartment to store perishable foodstuffs or frozen foods for short periods.



Never keep carbonated liquids in the freezer compartment.

The freezer temperature cannot be guaranteed if the refrigerator performs in a vehicle interior temperature below 16°C (60°F). Food might defrost. Raise the temperature setting to minimal level 4 if you expect vehicle interior temperatures below 20°C (68°F) and want to maintain freezing temperature in the freezer compartment. Consequently, the temperature of the refrigerator compartment will become lower. Raising the vehicle interior temperature will also contribute to a lower freezer temperature.

- Use the freezer to make ice cubes.
- Fill 2/3 of the ice-cube tray with water and put the tray in the freezer compartment.
- Make sure you only use drinking water.



Never eat ice-cubes or popsicles directly out of the freezer compartment. This can cause burns.

## 11. While driving

- Make sure no products in your refrigerator can move while driving. Secure the bottles in the door and the drawer with the bottle retainer and secure all food on the storage shelves.
- Close the door.



When you close and press the door of the refrigerator, the door locks automatically. While driving this door lock also secures the door.

## 12. Maintenance and cleaning

Norcold recommends an annual inspection service by an approved service center. Clean the refrigerator on a regular basis.

- Always remove any spills or contamination immediately with a mild household cleaner and soft cloth.
- If needed, remove the shelves, door bins, vegetable bins and clean the inside of the refrigerator and loose parts.
- Clean the outside of the refrigerator with a damp soft cloth.



Do not use abrasive cleaners, metal scouring pads or hard brushes. They could damage the refrigerator.



Never clean the refrigerator with soap or aggressive, caustic or soda-based cleaning agents.



The LED lamps can only be replaced by the manufacturer, together with a part of the appliance. Do not expose the refrigerator to water.



The loose parts of the refrigerator are not suitable for the dishwasher.



Only for refrigerators installed on floor level: Dust underneath the refrigerator might block the airflow required for a proper performance. Therefore, frequently remove all dust from this area, e.g. using a vacuum cleaner.



Only for refrigerators installed on floor level: We recommend removing the refrigerator once every 2 years to completely clean and remove all dust from both the refrigerator and the aperture. In a dusty environment we recommend to do this every year.

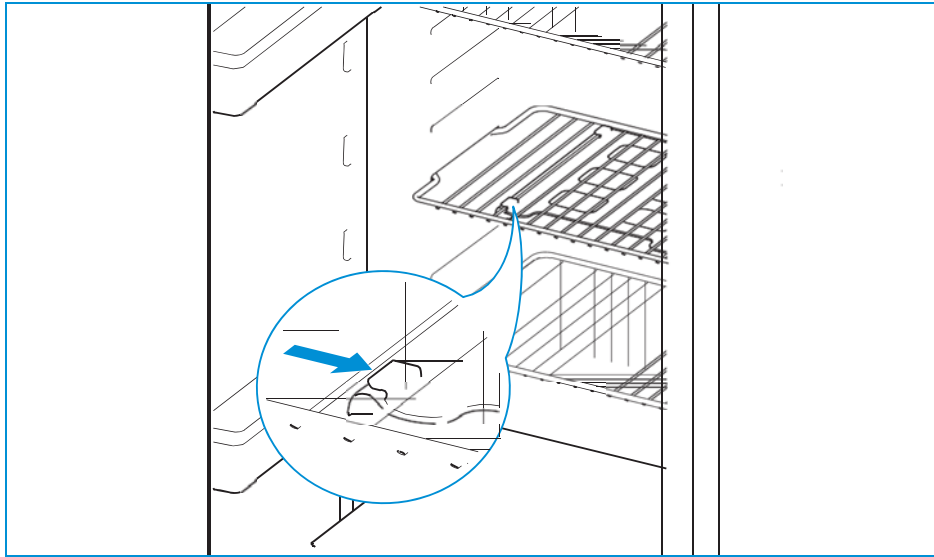
It is important to regularly clean the refrigerator for optimal performance. First remove the shelves, door bins, slide-out box and the drawer. Then clean those parts and the inside of the refrigerator with a soft cloth and a mild household cleaner. Use a wet, soft cloth for the outside of the refrigerator.

### Removing slide-out box system

To remove the slide-out box system:

- Completely open the refrigerator door and remove the slide-out box.

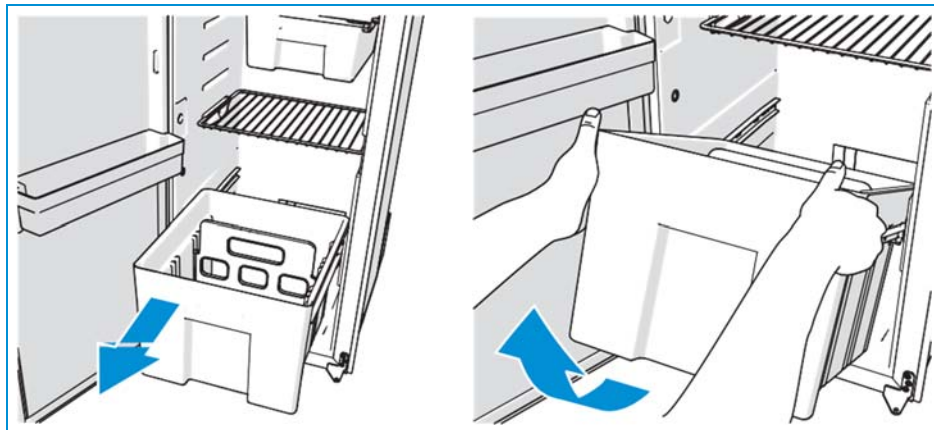
- Then slide the rail system to the right, as illustrated.
- Remove and clean the slide-out box system.
- After cleaning, place the system back in reverse order.
- Make sure the slide-out box system snaps into place.



### Removing drawer

To remove the drawer:

- Completely open the refrigerator door and pull the drawer until the stop.
- Then lift the drawer at the front, as illustrated.



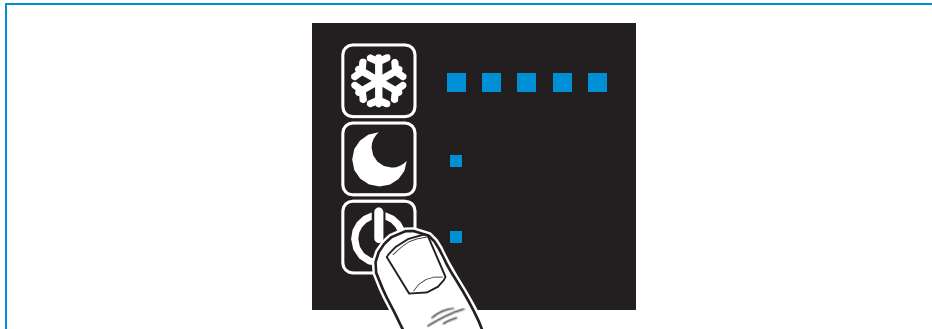
EN

- Remove and clean the drawer.
- After cleaning, place the drawer back in reverse order.

### 13. Switching off the refrigerator

Switch off the refrigerator before defrosting or storing your vehicle:


- Push the on/off button and hold it for 2 seconds. The blue light will dim.



### 14. Defrosting

Ice can build up in the freezer compartment and on the back surface of the refrigerator compartment. When more than 1/8 in. of ice has built up in any location of either compartment, the refrigerator needs to be defrosted. Failure to do this may damage the cooling system. To defrost the refrigerator:

- Remove all food.
- Switch off the refrigerator.
- Put a towel in the freezer compartment and on the bottom of the refrigerator compartment to catch any leakage water.
- Make sure the freezer compartment door is opened by a small gap, by inserting a non-sharp object in between the freezer compartment door seal and the cabinet liner.
- In case the external drainage possibility is not used, empty the drip tray when all ice is gone.
- Thoroughly dry the refrigerator after defrosting.

 Do not speed up the defrosting process by removing the ice layer with force or sharp objects or by using a hair-dryer or any other electrical device.

## 15. Troubleshooting

Problem	Possible cause	Solution
Fridge not cooling, compressor will not run at all	Battery voltage too low	Recharge battery
	Start delay of 1 minute (no is- sue]	Wait 1 minute
	Overheat due to high ambient	Turn off fridge for 1 hour, vent the vehicle, switch to day mode
	Vehicle fuse has blown	Check fuse rating, replace with 15A
Freezer not freezing	Interior temperature in vehicle is lower than 60°F	Raise the temperature of the vehicle inside and/or select a higher cooling level to minimal level 4
Fridge not cooling, compressor starts but switches off directly	Overheat due to high ambient temperature	Turn off fridge for 1 hour, vent the vehicle, switch to day mode
Fridge is overcooling	Temperature setting too high	Choose a lower temperature setting
Noise is more than in night mode	Fridge is in day mode	Change to night mode if temperatures are below 30°C (86°F).
Fridge not cooling, compressor runs continuously	Go to a service center	
Fridge has insufficient cooling	Overheat due to high ambient temperature	Turn off fridge for 1 hour, vent the vehicle, switch to day mode
	Ventilation openings, complete or partially blocked	Clean or remove blockage
	Door is not properly closed	Close door, make sure door seal in good order
	Too much ice on evaporator more than 1/8 in.	Defrost evaporator, make sure door seal is in good order

EN



If you cannot solve a problem, contact the authorized local Service Centre or Norcold Customer Service in your country.

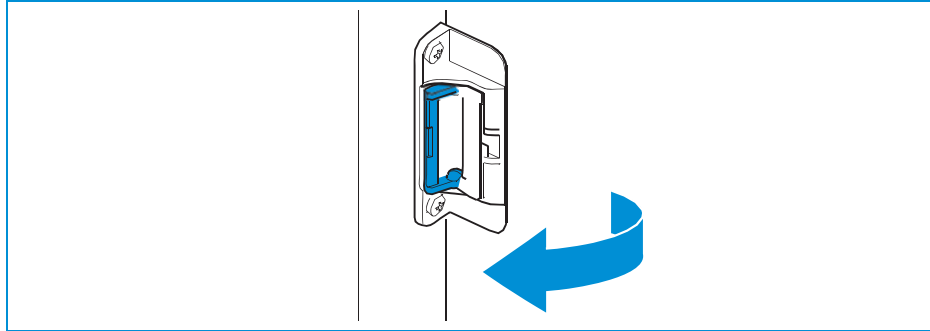
## 16. Storage

If you do not use the refrigerator for a longer period:

- Empty the refrigerator.
- Defrost the freezer compartment.
- Clean the complete refrigerator thoroughly.
- Keep the refrigerator door, as well as the freezer compartment door, open during storage.

To keep the door open during storage:

- Open the door.
- Rotate the storage lock.

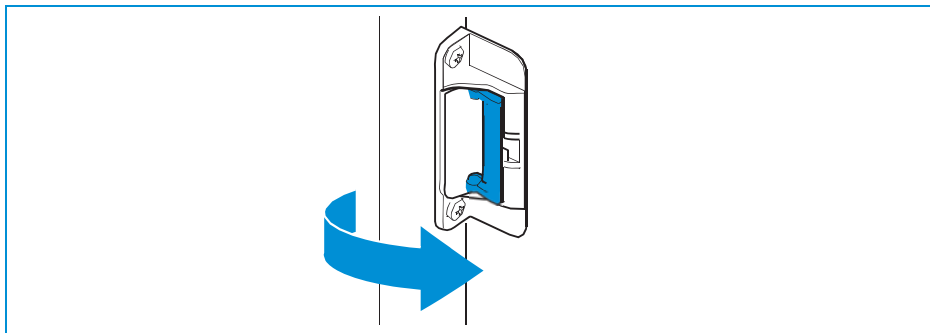


- Close the door until you hear the first click.

**i** Make sure the door is still slightly open

To use the refrigerator after storage:

- Rotate the storage lock back to its original position.



## 17. Servicing

All servicing must be carried out by an authorized person. Before any service work is started, the appliance must be disconnected from the electrical supplies.

For service, please contact your authorized local Service Centre giving details of the model and serial number on the data badge plus date of purchase.

## 18. Technical specifications

**Table 2: Refrigerator specifications**

Model	N1152
Display	LED
Total volume	5.3 cu Ft(152L)
Freezer volume	0.6 cu ft(18L)
Energy consumption day mode	0.50kWh/24h
Energy consumption night mode	0.40kWh/24h
Climate class day mode	T (60F to 100°F)
Climate class night mode	N(60F to 90°F)



These specifications may differ due to local standards.

## 19. Disposal

When your refrigerator has reached its end of life, dispose the product according to the local rules. Do not dispose the refrigerator with normal household waste.



Risk of fire and explosion with flammable refrigerant R290 (N1152).



**Table 3: Environmental Protection**



Discarded electric appliances are recyclable and should not be discarded in the domestic waste. Please actively support us in conserving resources and protecting the environment by returning this appliance to the collection centers (if available).



## 20. Questions

If you have questions about your product, parts, accessories or authorized services:

- Visit [www.Norcold.com](http://www.Norcold.com)
- If you cannot solve a problem, contact the authorized local Service Centre or Norcold Customer Service in your country.

## 21. Warranty

Norcold offers the end users of its products a three-year warranty. In the case of malfunction within the warranty period, Norcold will replace or repair the product. In this situation, the costs of replacement, labor costs for the replacement of defective components and/or the costs of the parts themselves will be paid for by Norcold.

Purchased spare parts carry a one-year warranty. Any fitting and/or labor costs are not covered by warranty.

1. To submit a claim under this warranty, the user must take the product to an authorized Norcold Service Partner. The claim will be assessed there.
2. Components replaced during repair under warranty become the property of Norcold.
3. This warranty does not prejudice current consumer protection laws.
4. This warranty is not valid in the case of products that are used for commercial purposes.
5. Warranty claims falling into one of the following categories will not be honored:
  - The product has been improperly used or the instructions in the manual have not been followed;
  - The product has not been installed in accordance with the instructions;
  - Modifications have been made to the product;
  - The product has been repaired but not by an authorized Norcold Service Partner;
  - The serial number or product code has been tampered with or removed;
  - The product has been damaged by misuse