

Repair instruction

Description: SC400/C500 Shaft

Part number: 51802

Look for Service Centres, Point of Sale addresses and other information on: www.thetford-europe.com

Version:	1
Date:	June 2010
Tools required:	Philips screwdriver

A

Remove waste-holding tank out of Cassette toilet and pull handle from control panel.



B

Pull control panel loose.



C

Swing waterfill funnel out.



D

Look up inside the toilet where you will find the pivot of the shaft, is held by 3 screws. Remove spring from shaft.



E

Remove 3 screws from pivoting bracket, and remove bracket.



F

Remove link from shaft, and take shaft out of.



Follow steps in reverse to place new shaft.

Repair instruction

Description: Control knob C500

Part number: 90701

Look for Service Centres, Point of Sale addresses and other information on: www.thetford-europe.eu

Version:

Date:

March 2010

Tools required:

Pliers

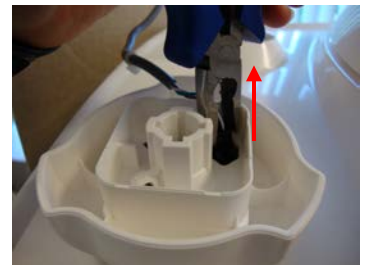
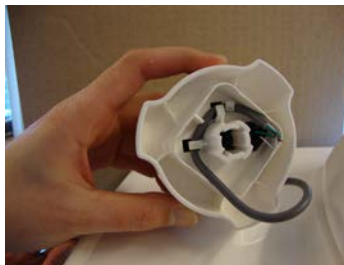
A

Pull control knob off.



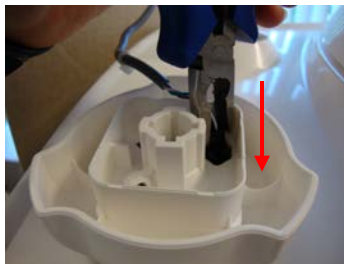
B

Free cable and remove plug using pliers.



C

Fit plug onto new control knob.



D

Refit control knob.



Repair instruction

Description: Drain tube C500

Part number: 90703

Look for Service Centres, Point of Sale addresses and other information on: www.thetford-europe.eu

Version:

Date:

March 2010

Tools required:

Philips Screwdriver

A

Remove waste-holding tank out of the Cassette toilet. Pull the sight glass away from the black rubber pipe. Note: make sure that the water tank is empty.



Unscrew the tunnel on the side where the drain tube is located (2 screws).

If necessary replace the sight glassclip by turning it and pulling outwards.



B

Press the unscrewed tunnel a bit to the left so the drain tube can be taken out.



C

Push new sight tube in
Cassette toilet and, place
sight glass back onto black
pipe.



D

Screw tunnel back into place.



Repair instruction

Description: PCB C500

Part number: 90704

Look for Service Centres, Point of Sale addresses and other information on:
www.thetford-europe.eu

Version:

Date:

March 2010

Tools required

-

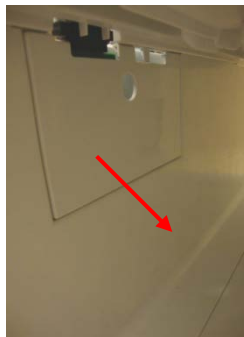
A

Pull the Waste holding tank out of the cassette



B

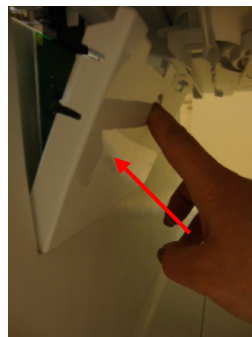
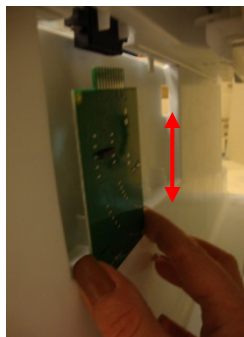
Remove the PCB cover on the inside



C

Pull PCB out and replace with new one

Place PCB cover back into position and press it back in place



Note: Be careful when handling the PCB

Repair instruction

Description: Float arm C500

Part number: 90706

Look for Service Centres, Point of Sale addresses and other information on: www.thetford-europe.eu

Version:

Date:

March 2010

Tools required:

Flat screwdriver

A

While looking down on the top of the tank you will notice the sliding cover. Using the sliding cover as a lever, rotate the complete mechanism anti clockwise until the arrow points to the second dot.



The complete disc and mechanism can now be removed.

B

The float is now easily visible. Take float arm out of retainer.



Place flat screwdriver between rib and retainer and take it out



C

Press new float arm into position.



D

Reverse the process to replace the mechanism.

Repair instruction

Description: C502 Pump

Part number: 90714

Look for Service Centres, Point of Sale addresses and other information on: www.thetford.eu

Version:

Date:

April 2012

Tools required:

Crosshead screwdriver

A

Remove waste-holding tank out of the Cassette toilet



B

Push seat & cover to the right, hold this position while pulling the right side, removing the seat & cover from the toilet. Then remove two screws on the side.



C

Looking into the toilet remove 2 screws on the flange lock. By turning the flange lock it can be taken off.



D

Remove flange lock so that complete toilet bowl can be taken out.



E

While removing the toilet bowl, the nozzle is still in position. Click nozzle loose by pulling downwards.



F

Disconnect connectors in the back of the toilet.



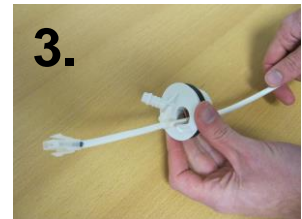
G

Looking from the top, turn the bayonet to the right (note: this is the opposite way towards the arrow is pointed). Take pump out.



H

Remove tube from bayonet (1), push grommet through bayonet (2), remove bayonet from wire (3) and remove tube from pump (4).



I

Follow instructions in reverse to assemble the new pump.