



# IMPORTANT INFORMATION

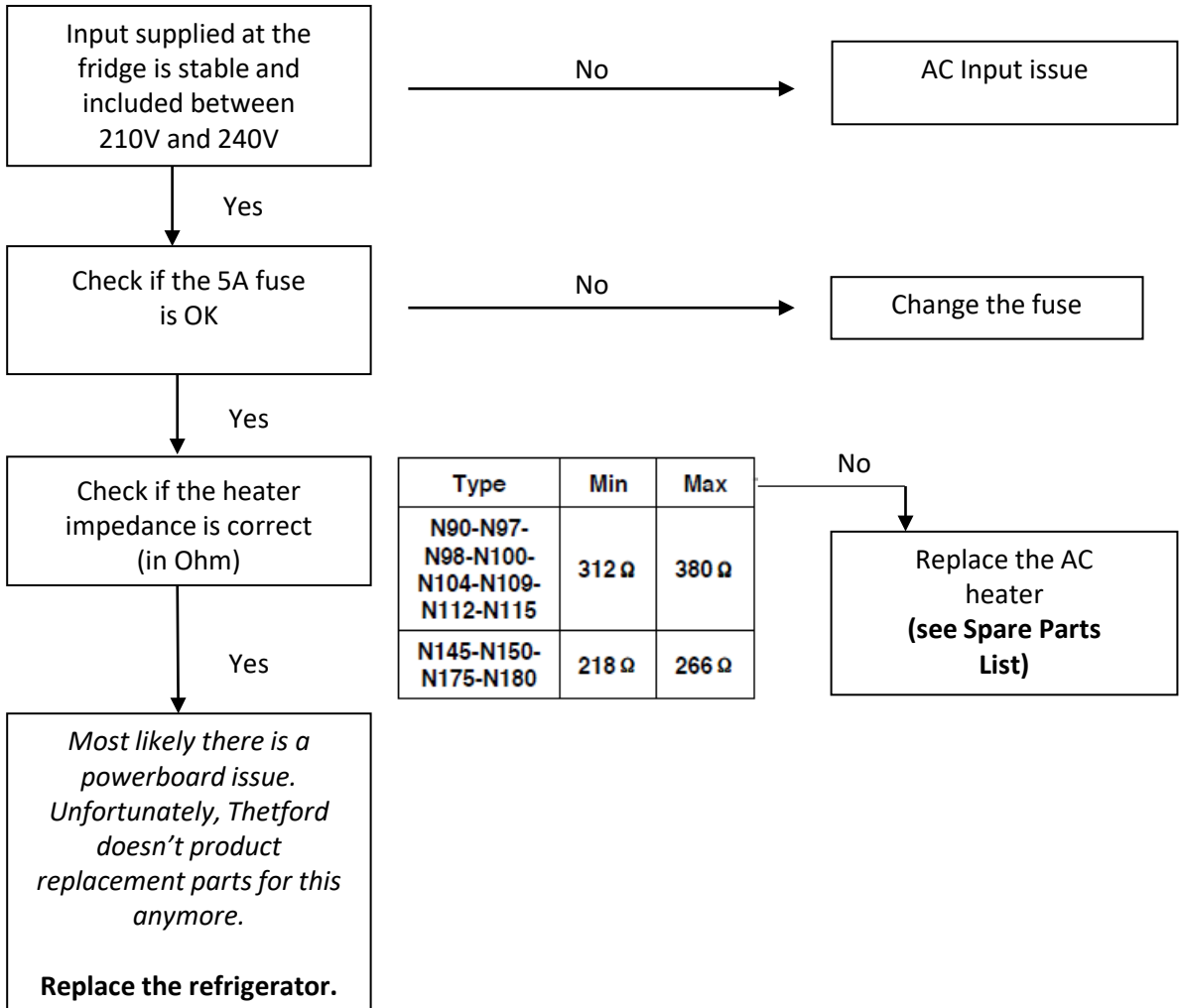
## DISCLAIMER

Thetford recommends and strongly advises users to engage the services of a qualified and licensed professional for the installation, maintenance, repair, or any other servicing needs associated with the product. The user understands and assumes full responsibility for hiring a professional with the requisite skills, knowledge, and qualifications to service your product. This includes, but is not limited to, tasks such as installation, repairs, modifications, or any other service required. Thetford disclaims any and all liability for any damages, losses, injuries, or other adverse consequences that may result from the user's failure to hire a qualified professional for the servicing of your product. The user acknowledges the importance of ensuring that the hired professional adheres to industry standards, guidelines, and local regulations applicable to the servicing of your product. Thetford is not responsible for the actions, omissions, or negligence of the hired professional. The user agrees to indemnify and hold harmless Thetford from any claims, liabilities, damages, costs, or expenses, including legal fees, arising from the user's decision to hire, or not hire, a professional for the servicing of the product. By using your product, the user affirms that they have read, understood, and voluntarily agreed to this disclaimer.

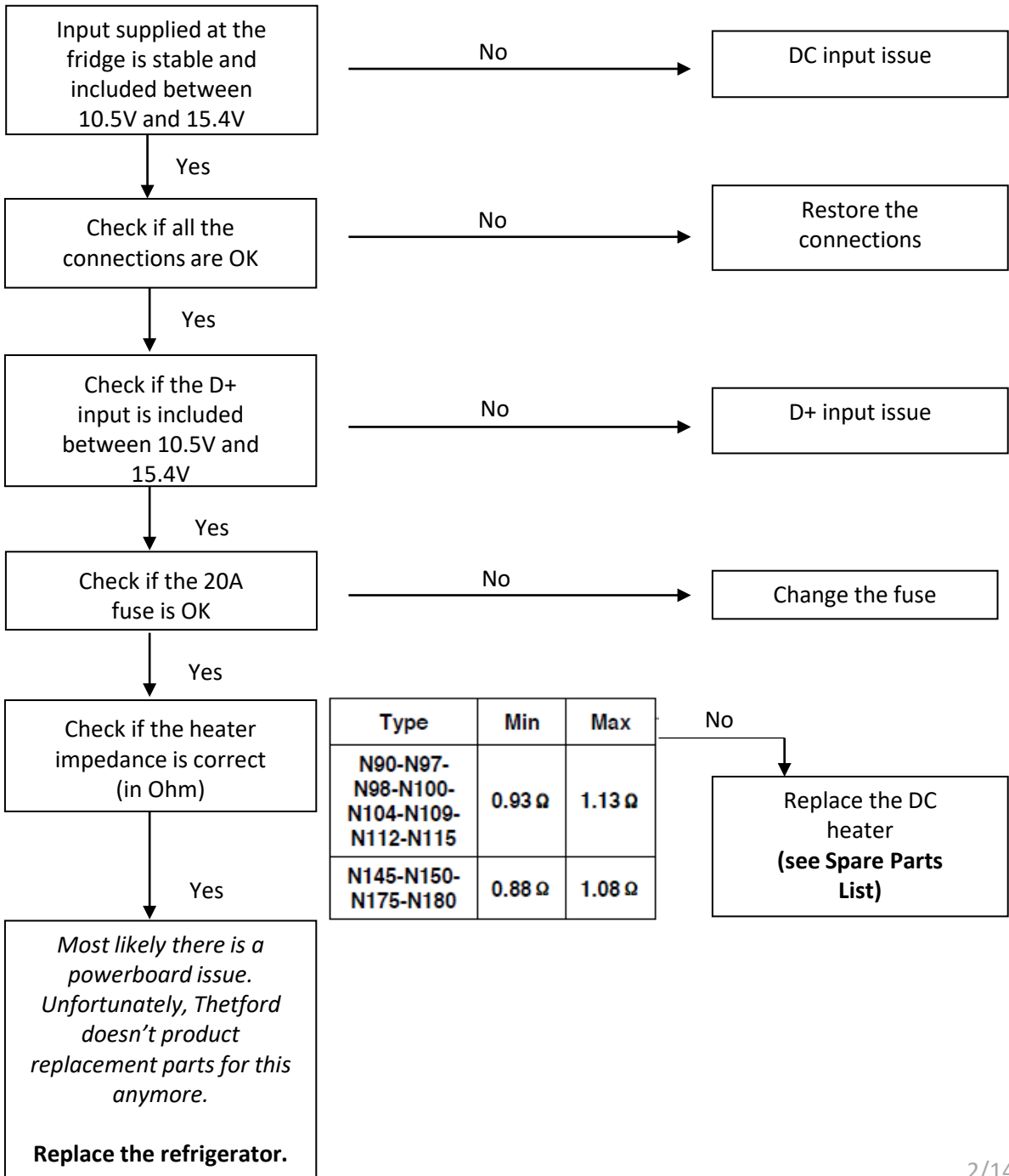
## Troubleshooting

REFRIGERATION  
 ABSORPTION REFRIGERATORS  
 Premium LCD line

### ERROR CODE 1: AC heater current is measured to be 75% below nominal current

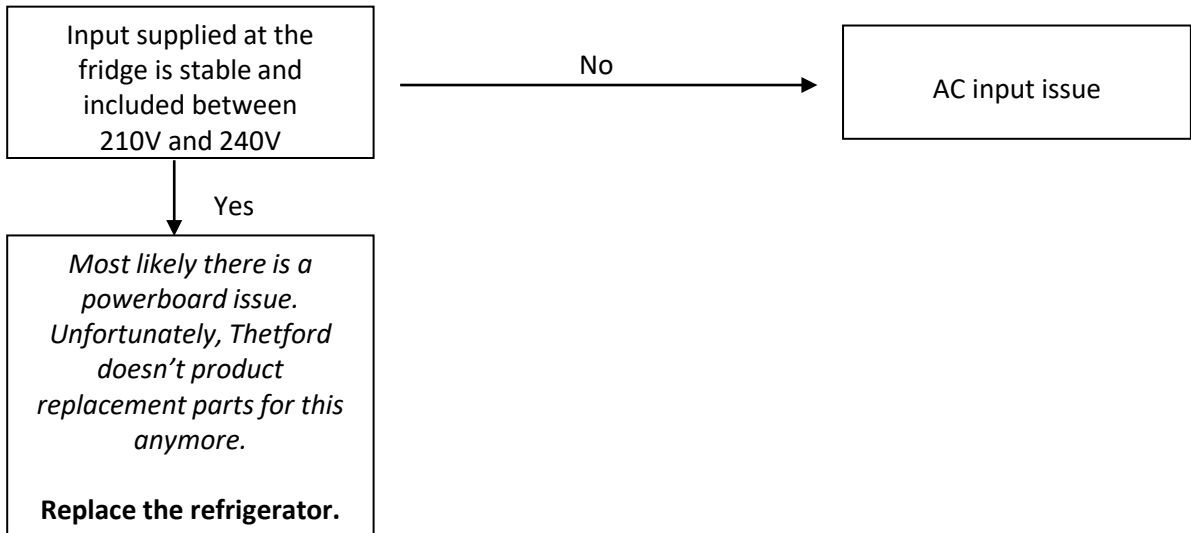


### ERROR CODE 2: DC heater current is measured to be 75% below nominal current



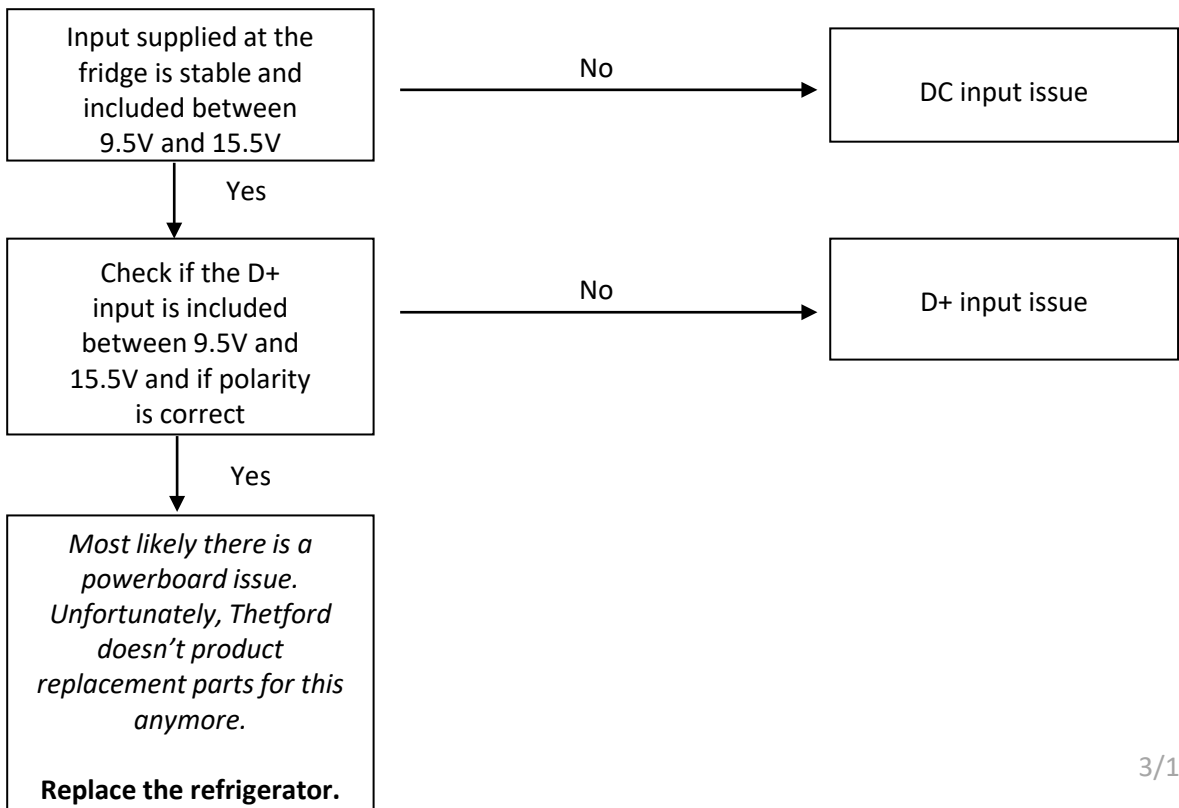
### ERROR CODE 3: AC heater is ON when it should be OFF

---



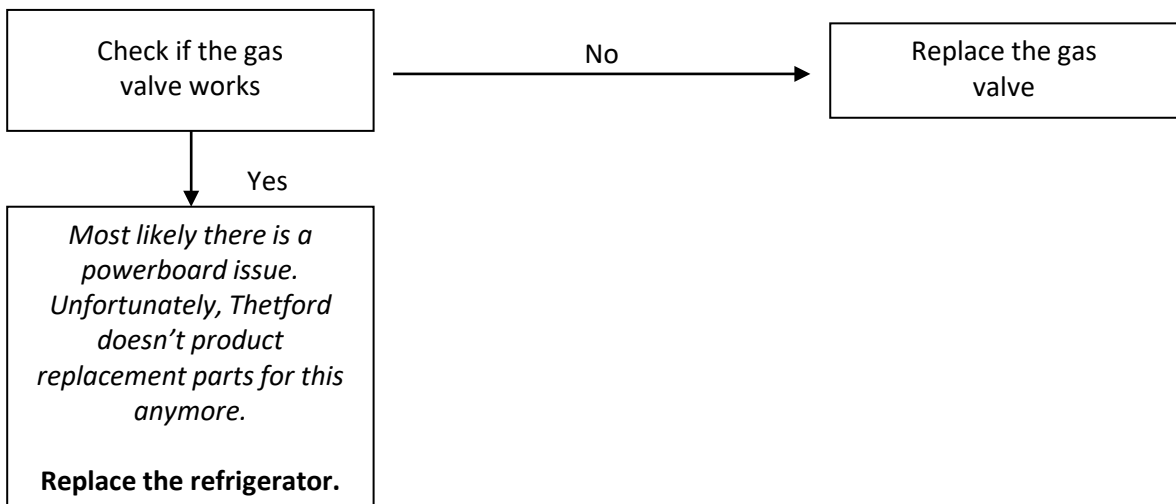
### ERROR CODE 4: DC heater is ON when it should be OFF

---



### ERROR CODE 5: Senses flame when gas should be OFF

---



### ERROR CODE 6: Senses gas output terminal ON when should be OFF

---

*Most likely there is a powerboard issue. Unfortunately, Thetford doesn't produce replacement parts for this anymore.*

**Replace the refrigerator.**

### ERROR CODE 7: Senses gas output terminal OFF when should be ON

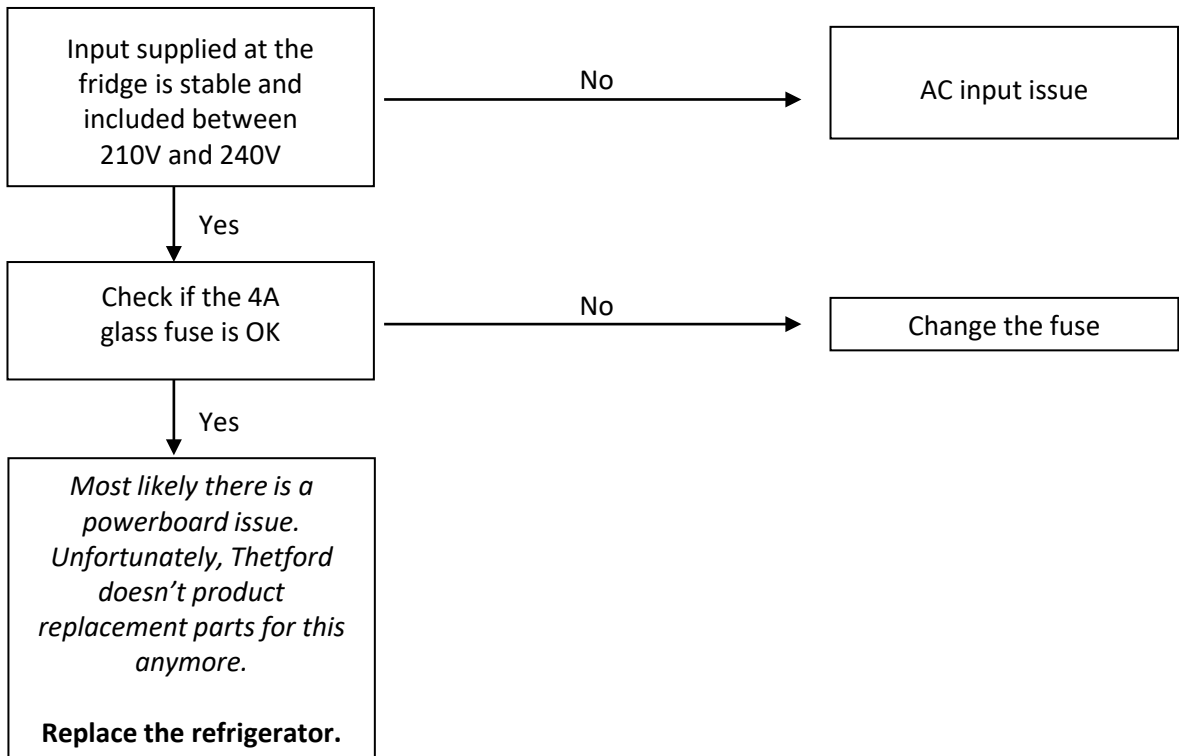
---

*Most likely there is a powerboard issue. Unfortunately, Thetford doesn't produce replacement parts for this anymore.*

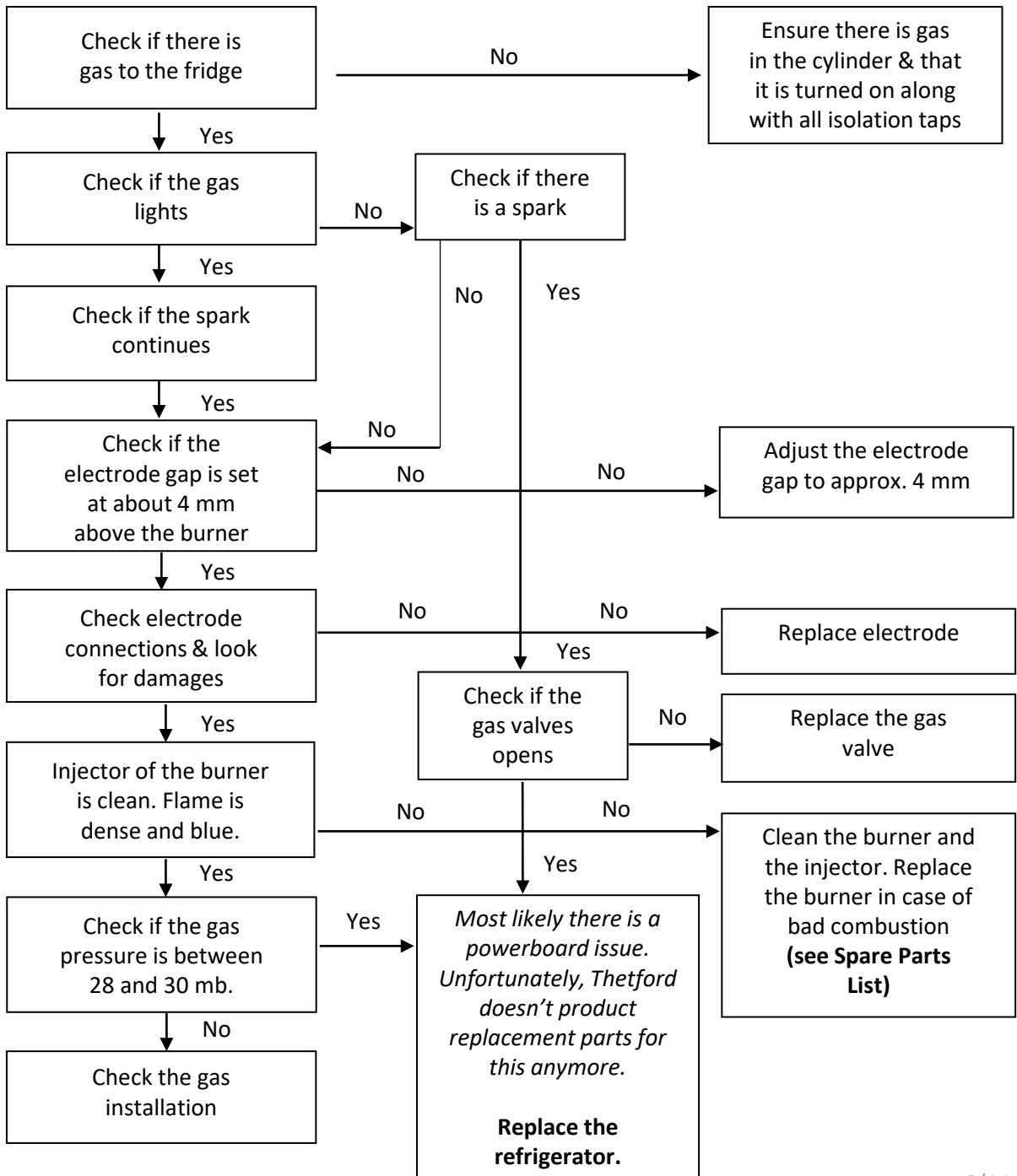
**Replace the refrigerator.**

### ERROR CODE 8: AC mains supply is below 20% nominal

---



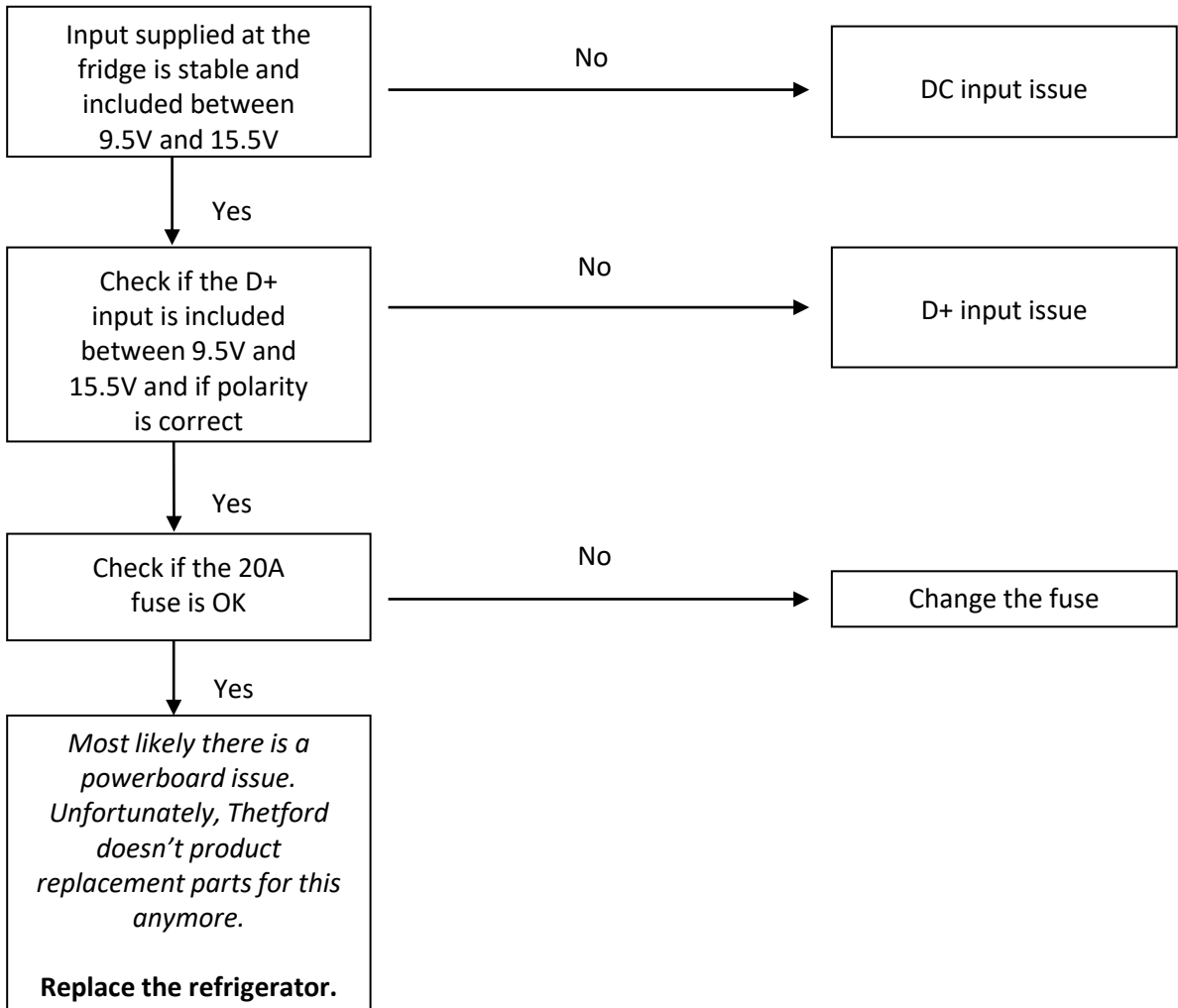
### ERROR CODE 9: Gas lockout because flame fails to ignite after 30 seconds



### ERROR CODE 10: "No engine running" signal is present and control is in Manual DC mode



To know if D+ polarity is good, select manually DC mode engine off. If no error code occurs, that means the D+ input is versed. Ensure power supply is capable to supply correct amperage.



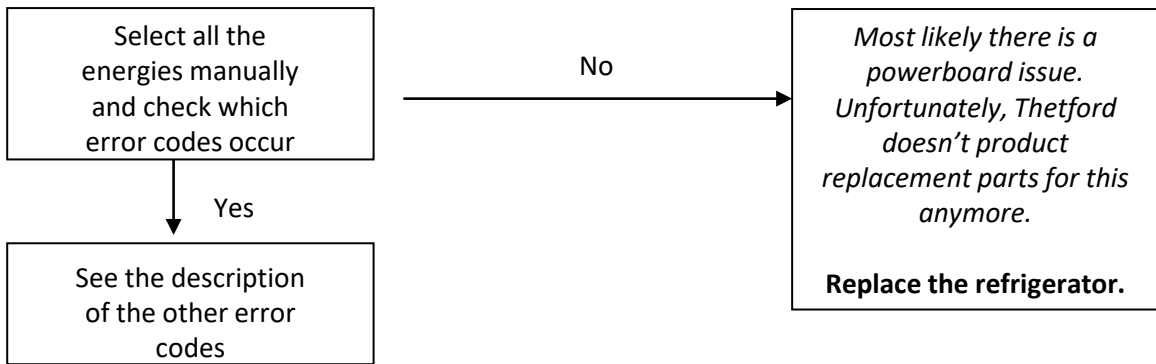


### ERROR CODE 11: No energy source is available and control is on AUTO mode

---



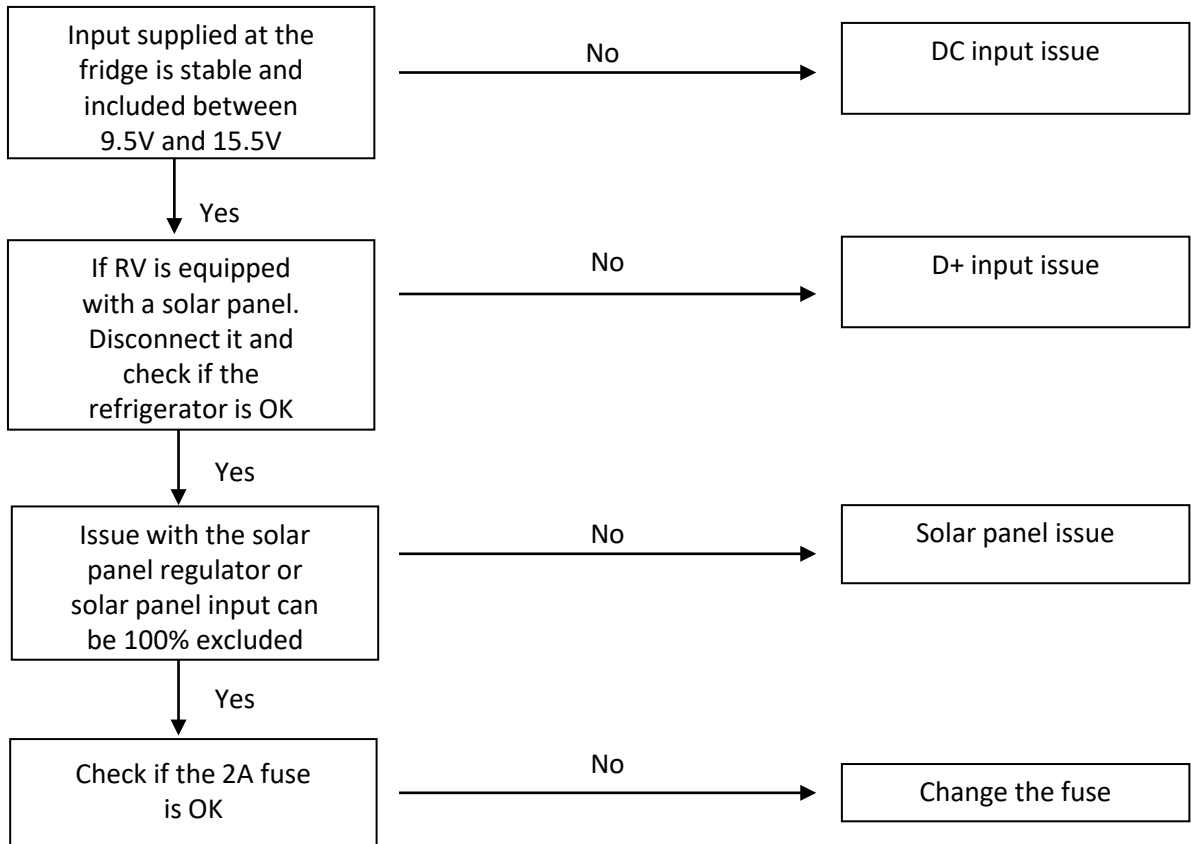
Please make sure that all energy sources are available during the trial



### ERROR CODE 12: Supply voltage DC is out of range (9.5V 15.5V)

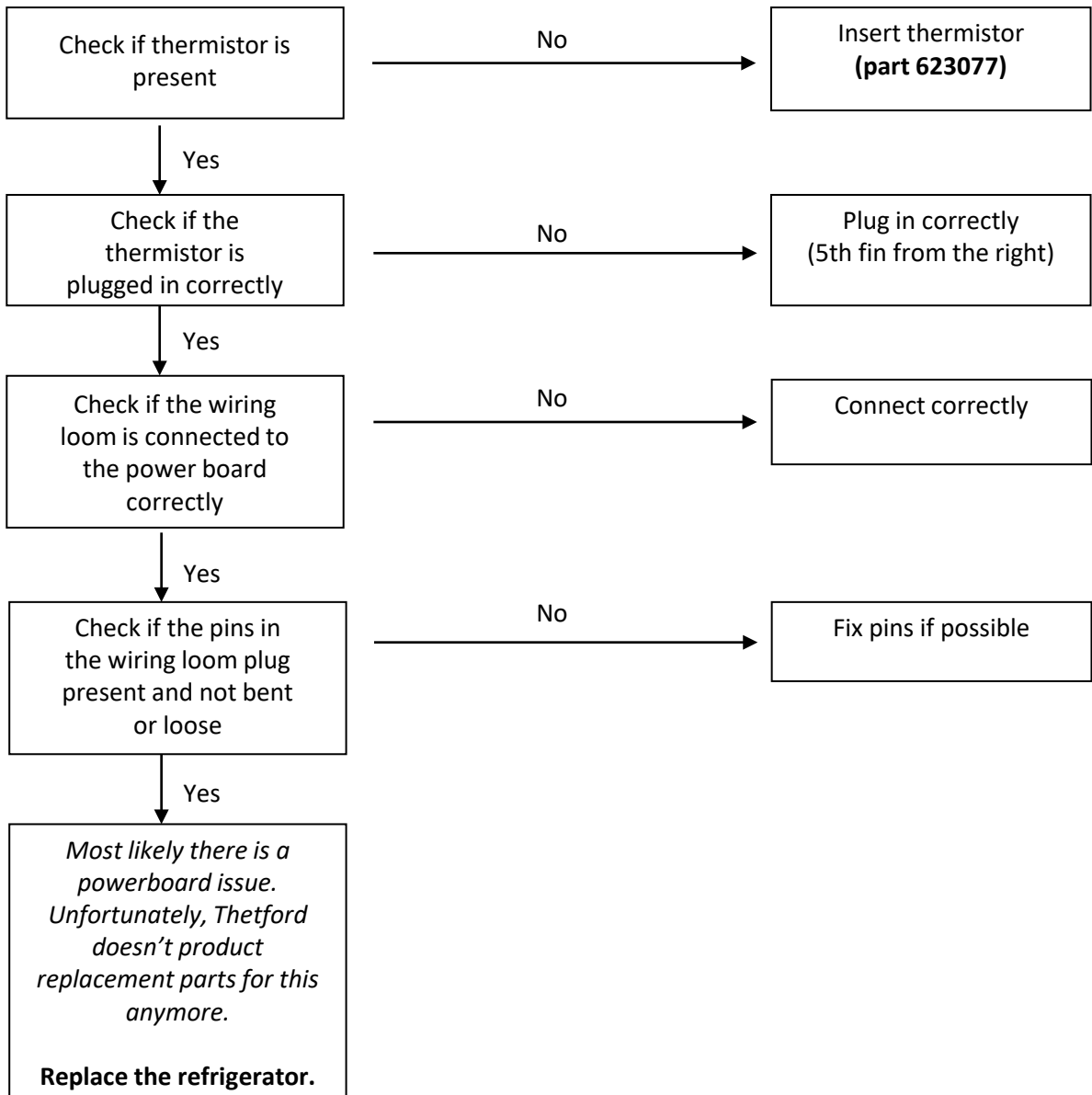


If DC mode have been selected manually, the refrigerator is not switching automatically on another source of energy when the engine is off



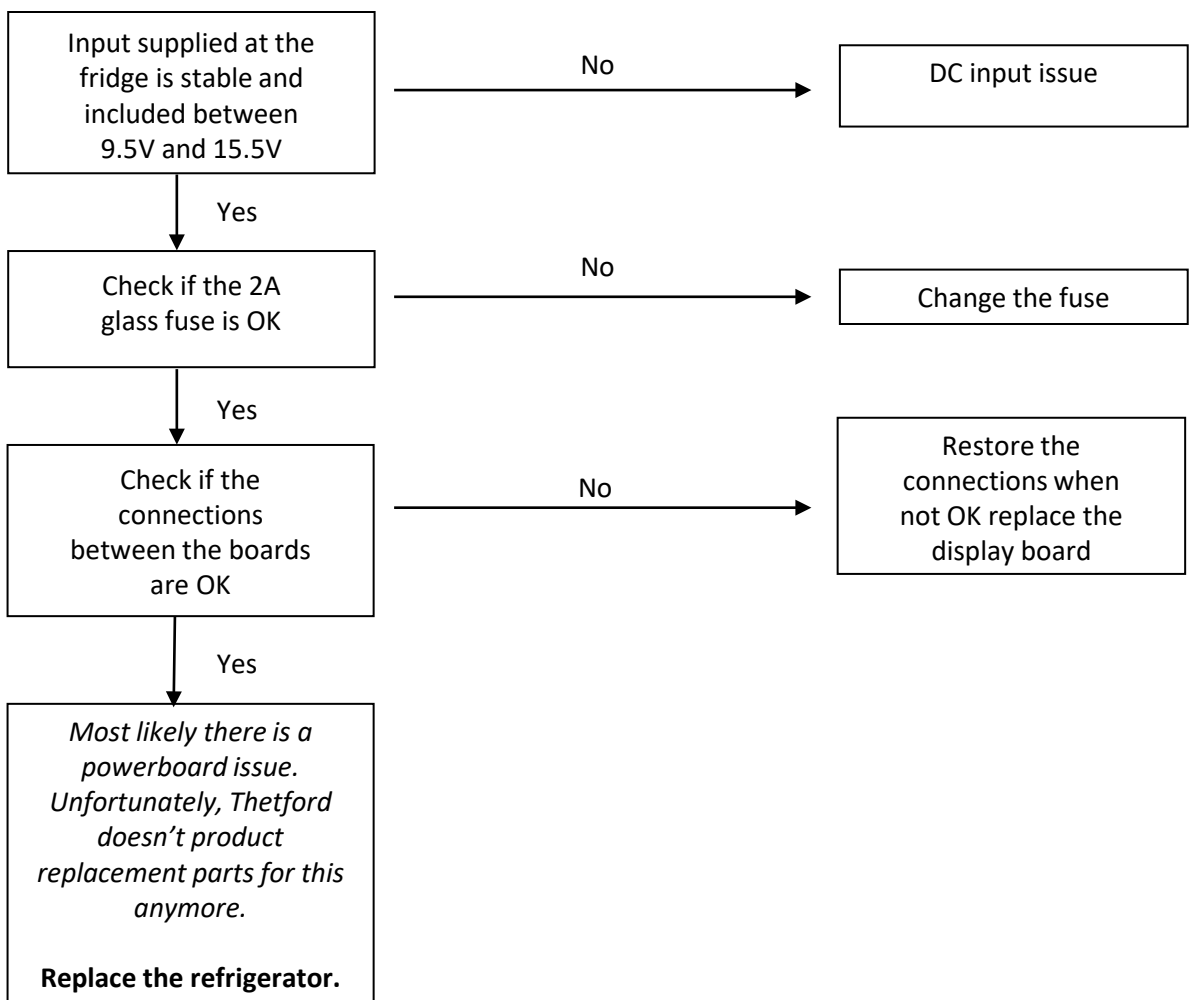
### ERROR CODE 13: Thermistor fails, control automatically switches to backup mode (BOS)

---



### ERROR CODE 14: Display board and power board lost communication to each other

---

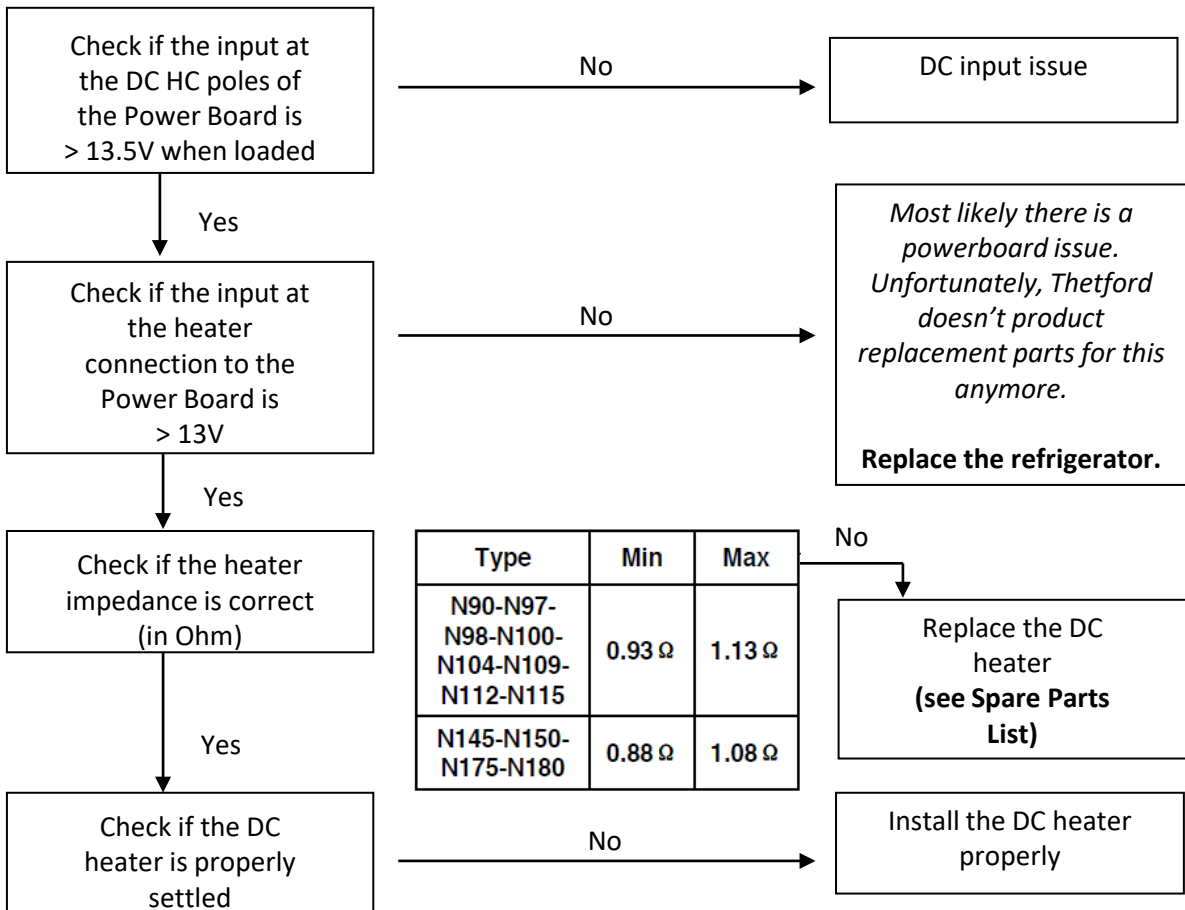


### Lack of performance; No error code

#### ➤ On 12 Volts



Do the testing of the fridges on the manual mode

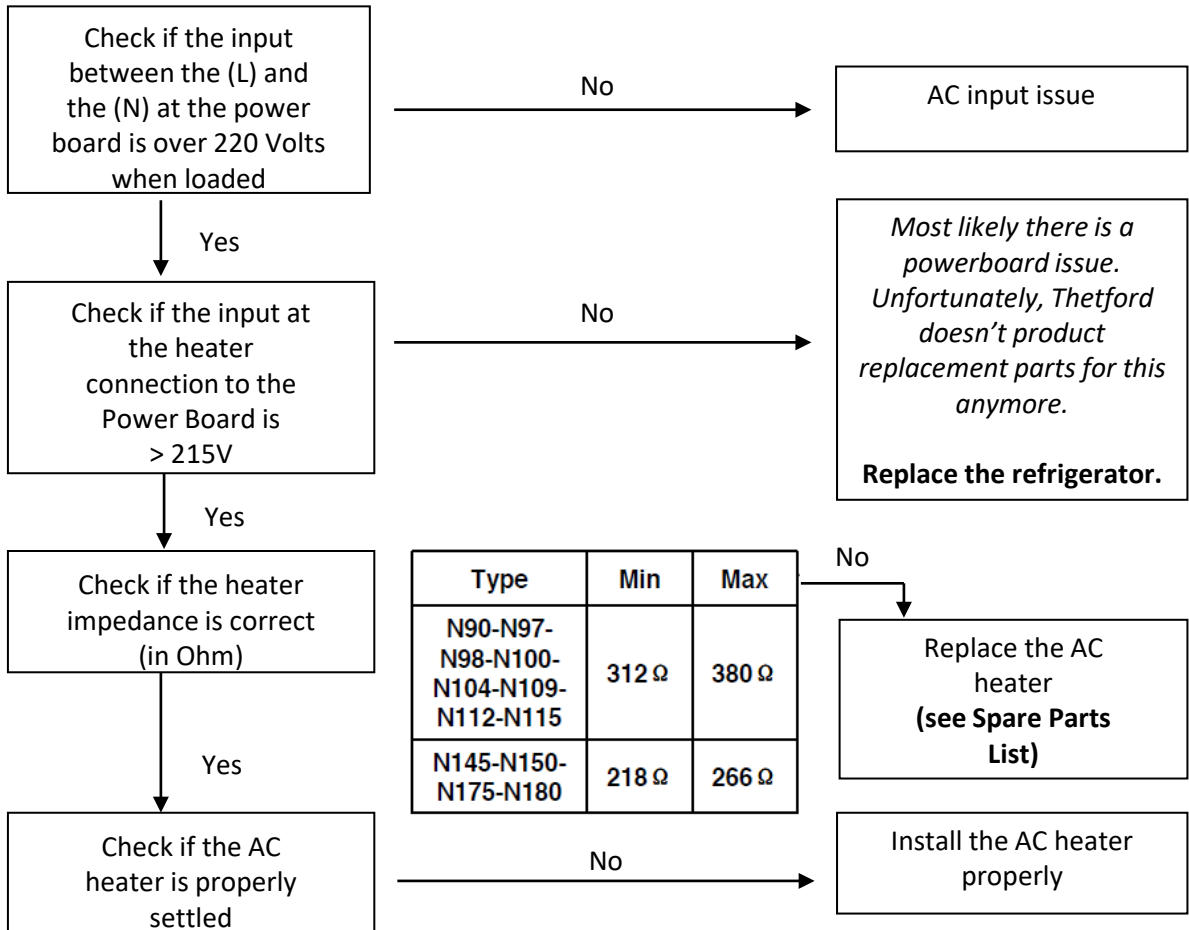


### Lack of performance; No error code

#### ➤ On 230 Volts



Do the testing of the fridges on the manual mode



### Lack of performance; No error code

#### ➤ On Gas



Do the testing of the fridges on the manual mode

