



Troubleshooting

# IMPORTANT INFORMATION

## DISCLAIMER

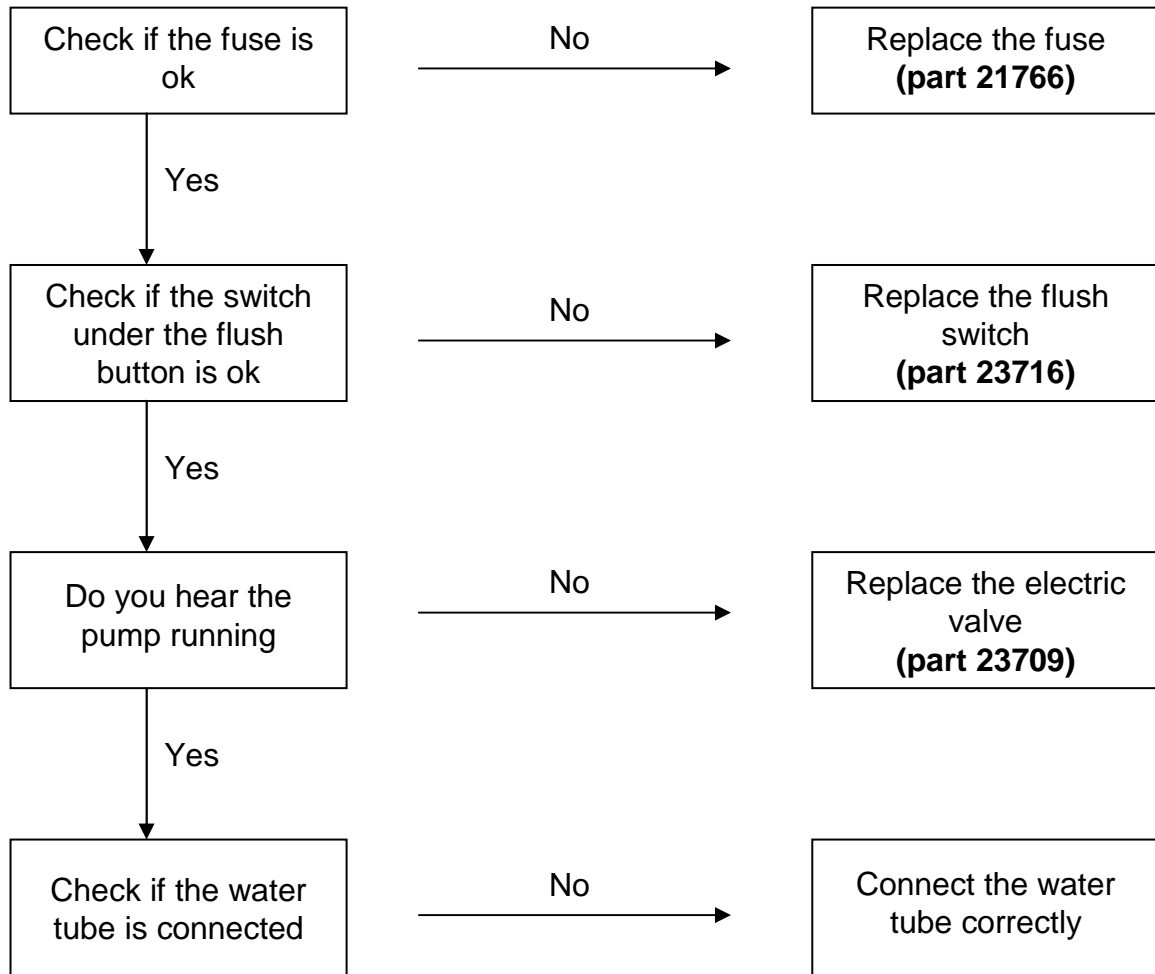
TheTford recommends and strongly advises users to engage the services of a qualified and licensed professional for the installation, maintenance, repair, or any other servicing needs associated with the product. The user understands and assumes full responsibility for hiring a professional with the requisite skills, knowledge, and qualifications to service your product. This includes, but is not limited to, tasks such as installation, repairs, modifications, or any other service required. TheTford disclaims any and all liability for any damages, losses, injuries, or other adverse consequences that may result from the user's failure to hire a qualified professional for the servicing of your product. The user acknowledges the importance of ensuring that the hired professional adheres to industry standards, guidelines, and local regulations applicable to the servicing of your product. TheTford is not responsible for the actions, omissions, or negligence of the hired professional. The user agrees to indemnify and hold harmless TheTford from any claims, liabilities, damages, costs, or expenses, including legal fees, arising from the user's decision to hire, or not hire, a professional for the servicing of the product. By using your product, the user affirms that they have read, understood, and voluntarily agreed to this disclaimer.



## 1. No flush C200S/CS



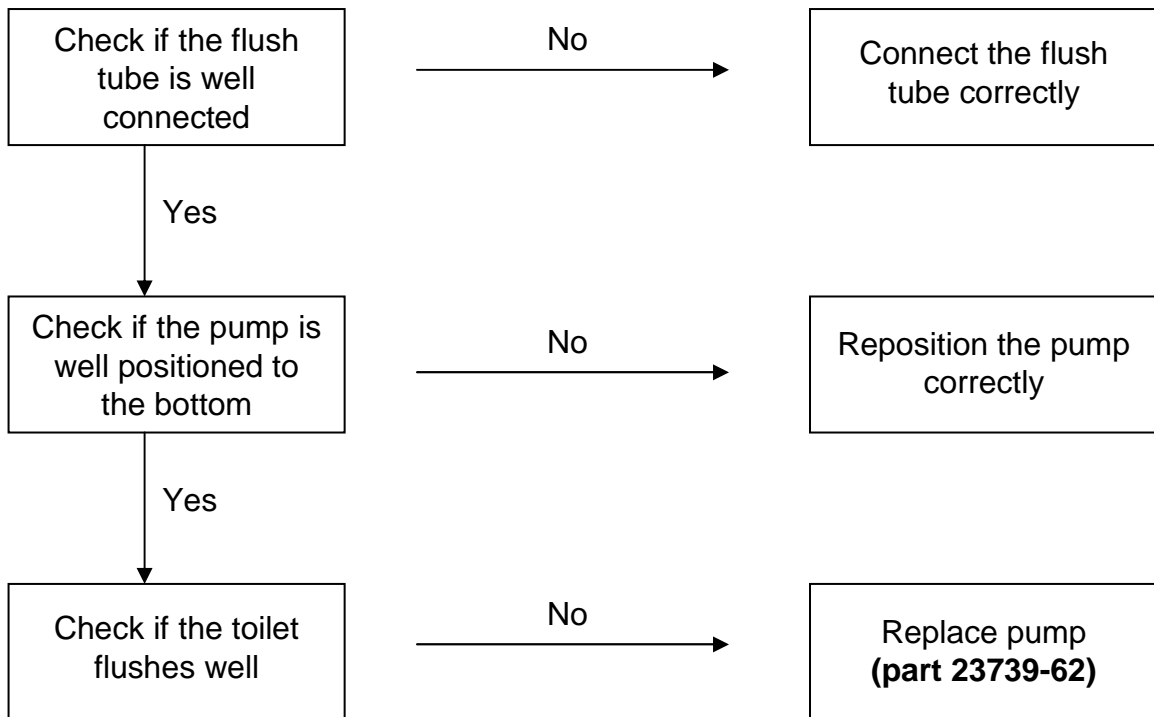
Before starting, check if the toilet is well connected  
see the 12V connection scheme



Repair instructions you can find in the repair  
instructions chapter and/or on our website  
[www.thetford.eu](http://www.thetford.eu)



## 1. No flush C200CW



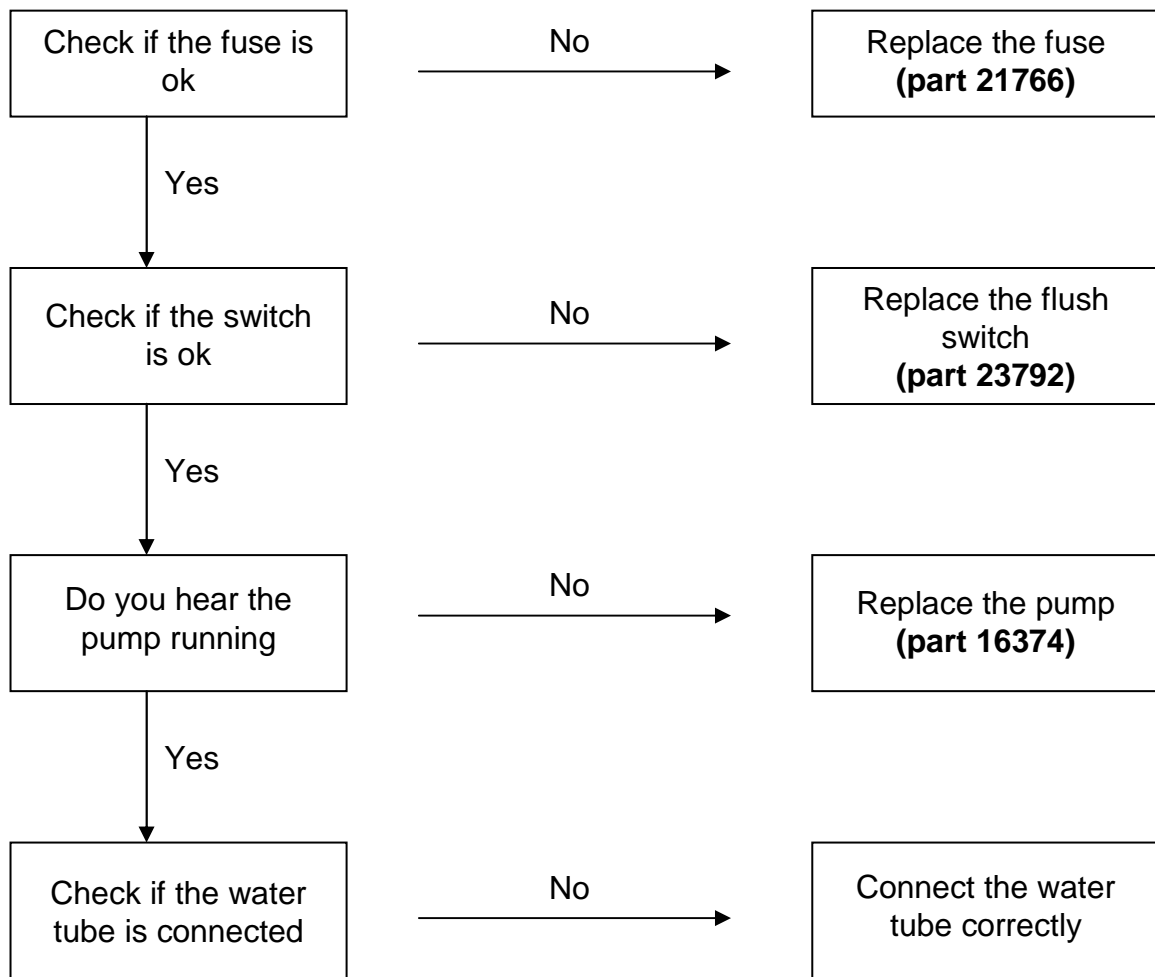
Repair instruction for 23739-62 you can find in the repair instructions chapter and/or on our website [www.thetford.eu](http://www.thetford.eu)



# 1. No flush C200CWE



Before starting, check if the toilet is well connected  
see the 12V connection scheme



Repair instructions you can find in the repair  
instructions chapter and/or on our website  
[www.thetford.eu](http://www.thetford.eu)