



Troubleshooting

IMPORTANT INFORMATION

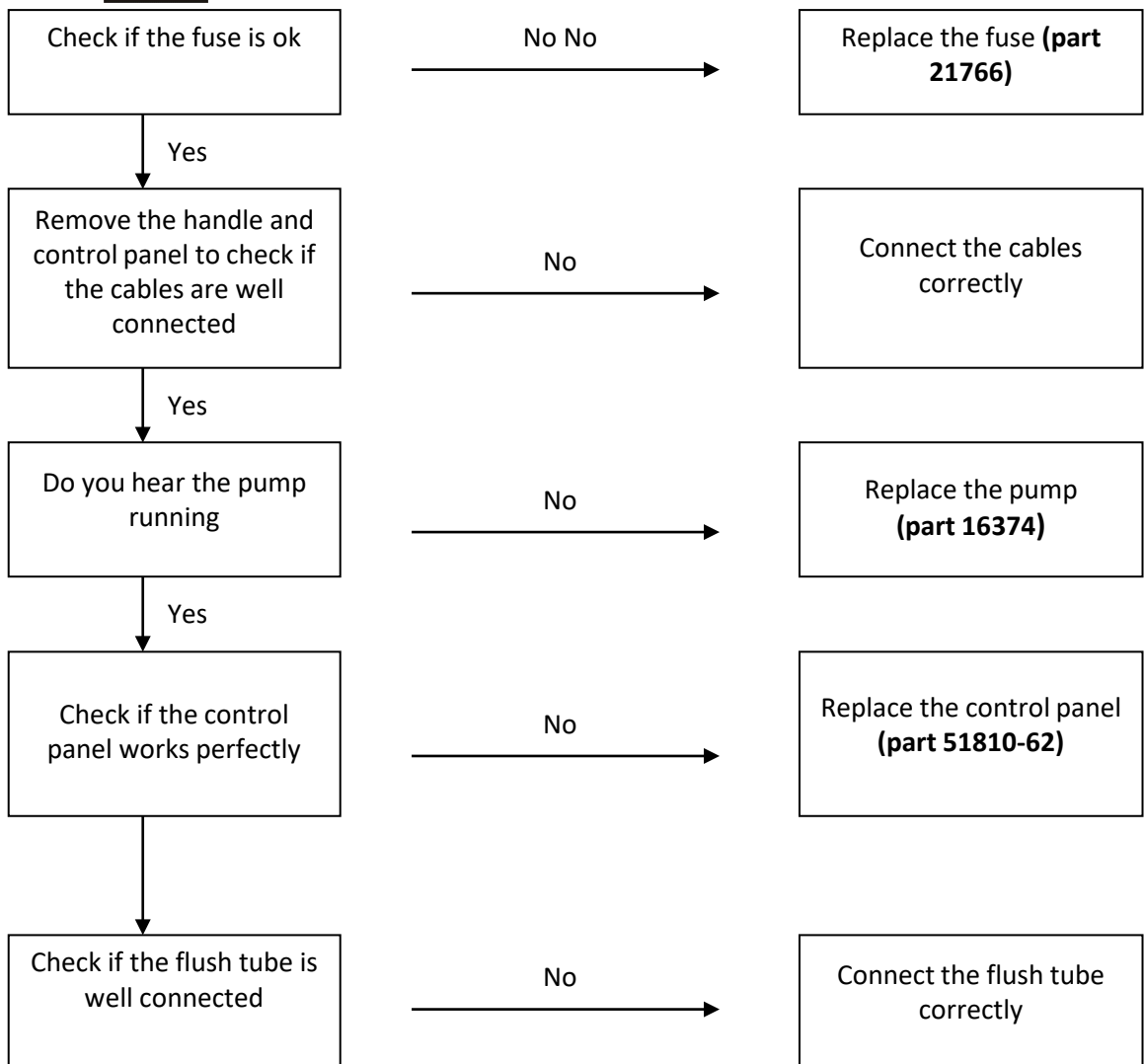
DISCLAIMER

TheTford recommends and strongly advises users to engage the services of a qualified and licensed professional for the installation, maintenance, repair, or any other servicing needs associated with the product. The user understands and assumes full responsibility for hiring a professional with the requisite skills, knowledge, and qualifications to service your product. This includes, but is not limited to, tasks such as installation, repairs, modifications, or any other service required. TheTford disclaims any and all liability for any damages, losses, injuries, or other adverse consequences that may result from the user's failure to hire a qualified professional for the servicing of your product. The user acknowledges the importance of ensuring that the hired professional adheres to industry standards, guidelines, and local regulations applicable to the servicing of your product. TheTford is not responsible for the actions, omissions, or negligence of the hired professional. The user agrees to indemnify and hold harmless TheTford from any claims, liabilities, damages, costs, or expenses, including legal fees, arising from the user's decision to hire, or not hire, a professional for the servicing of the product. By using your product, the user affirms that they have read, understood, and voluntarily agreed to this disclaimer.

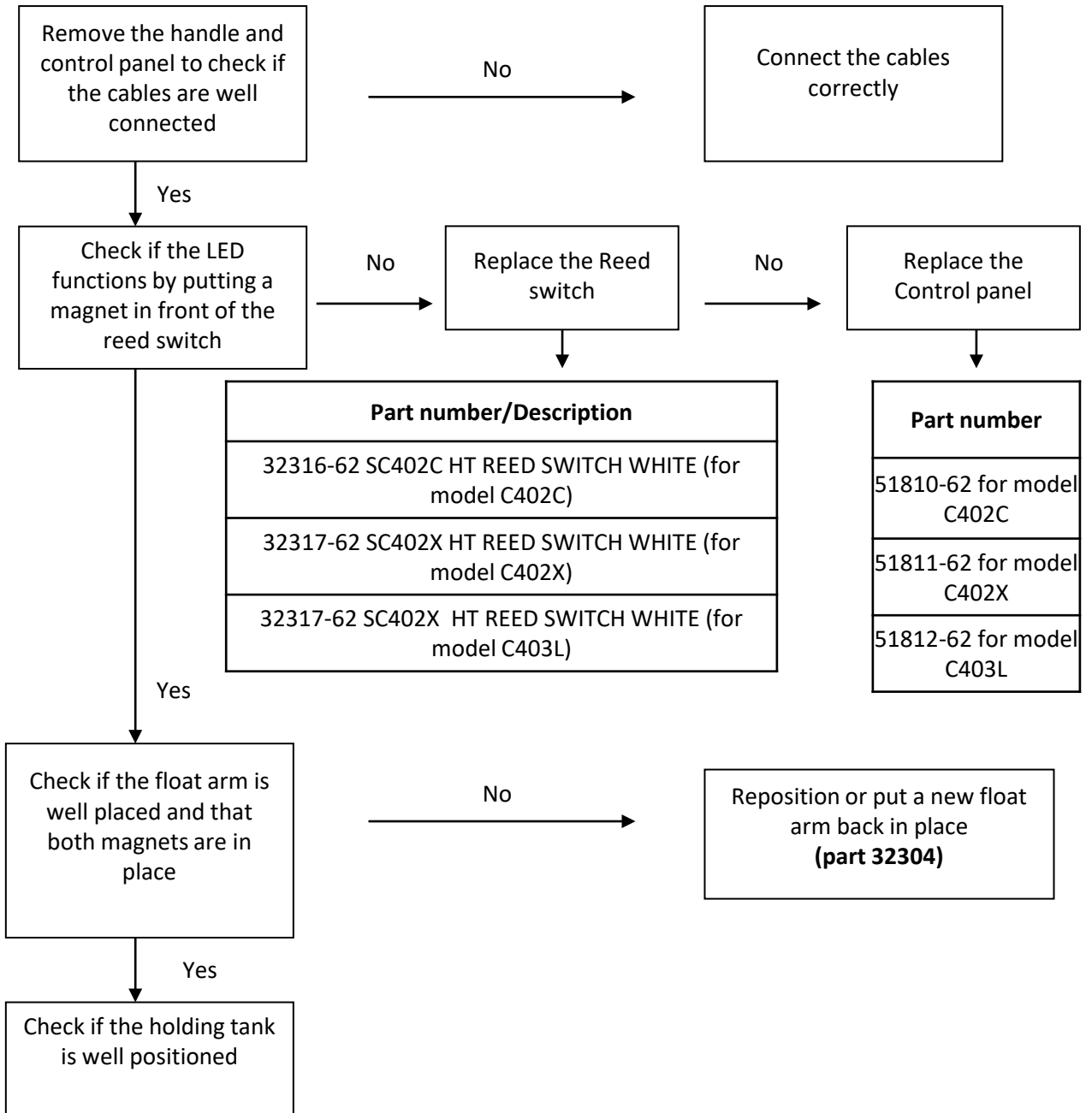
No Flush C402C



Before starting, check if the toilet is well connected see the 12V connection scheme

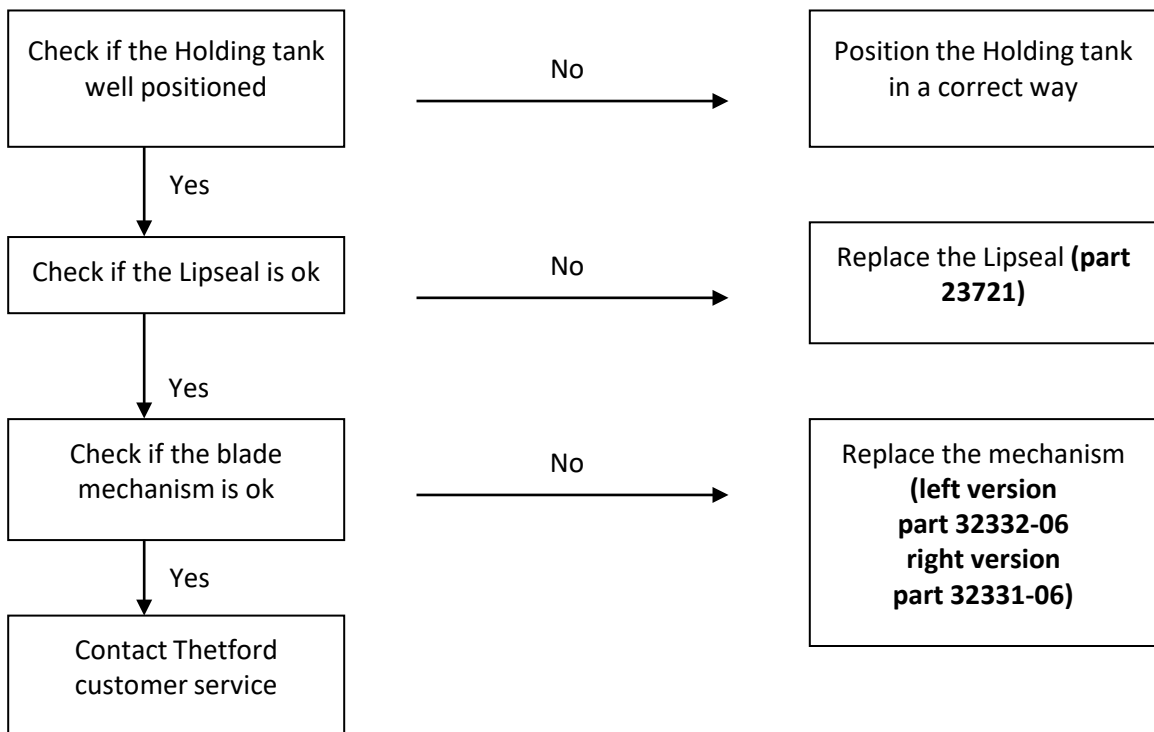


No level indication of the C400 Holding Tank

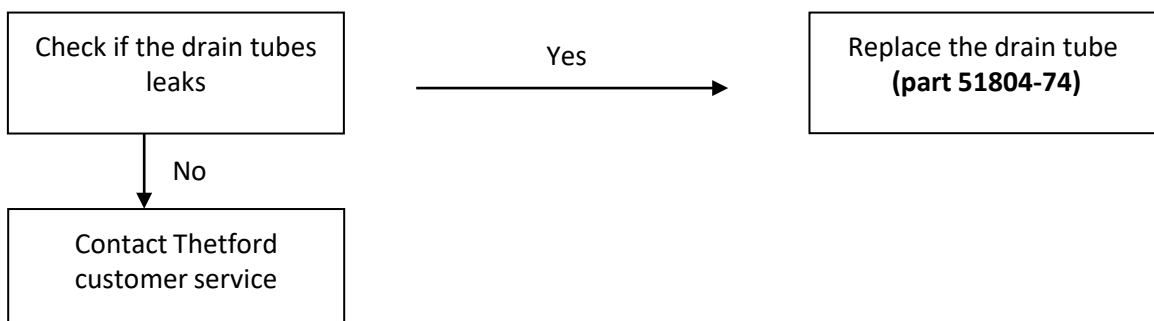


Leakages

➤ Leakage between the bowl and the Holding tank



➤ Leakage at the Water tank



Leakages

➤ **Leakage at the Holding tank**

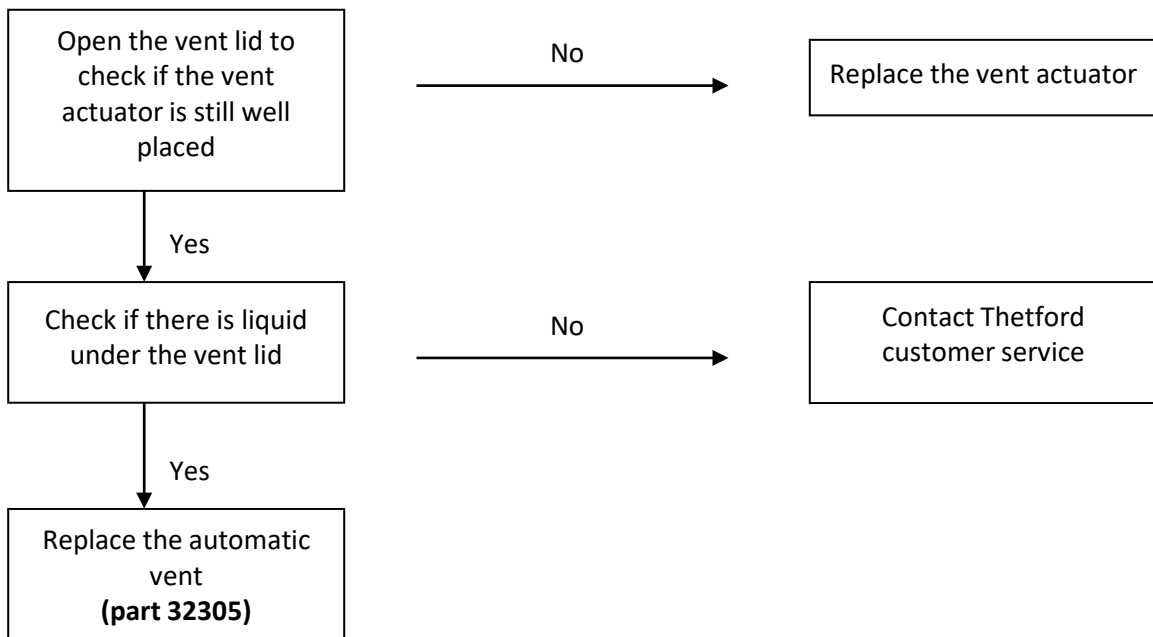
▪ **Leakage at the vent button**

Replace the vent button
(part 32307-16)

▪ **Leakage at the pour out spout**

Replace the pour out
spout
(part 32306-06)

▪ **Leakage at the vent lid**





Troubleshooting

IMPORTANT INFORMATION

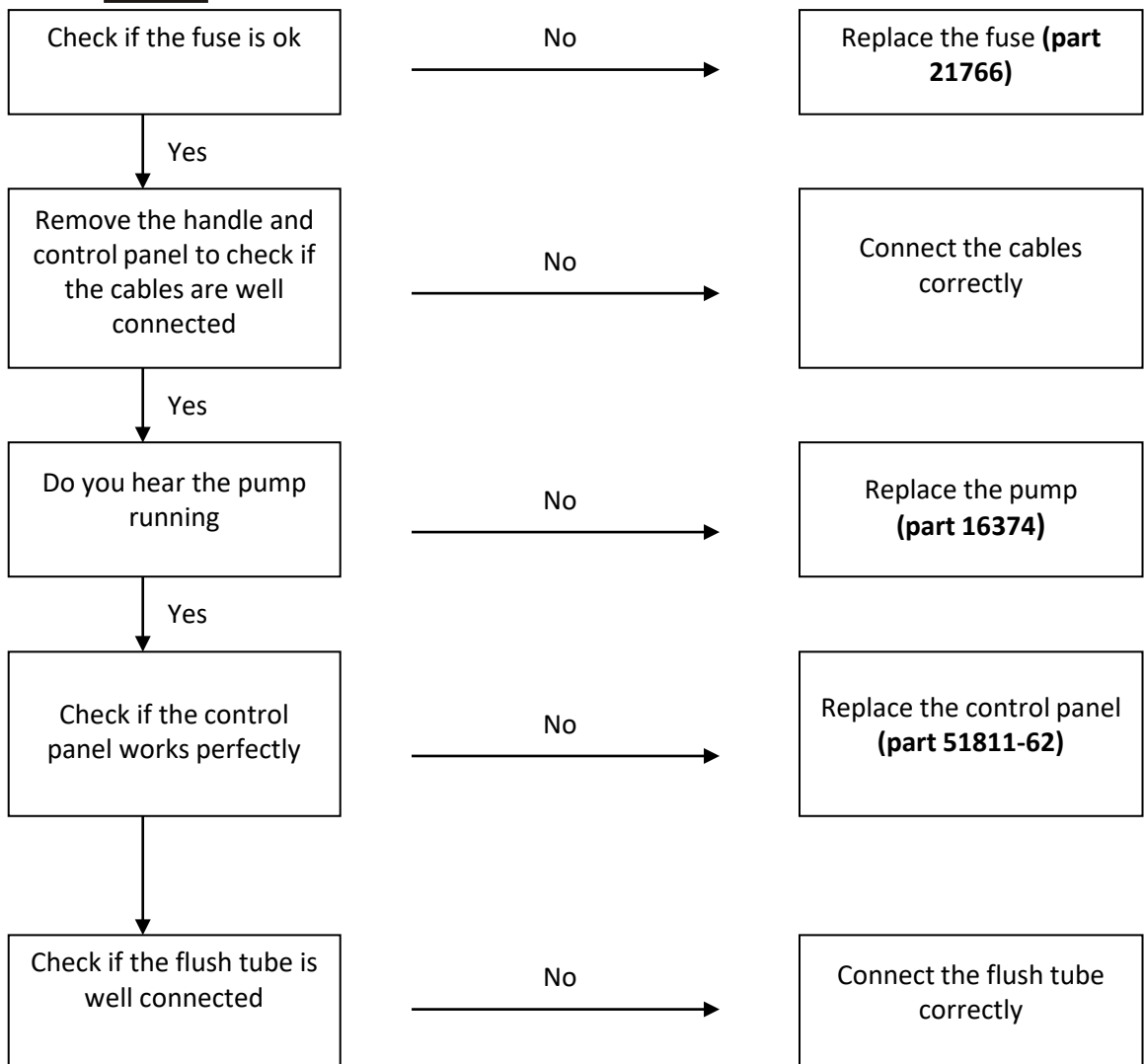
DISCLAIMER

TheTford recommends and strongly advises users to engage the services of a qualified and licensed professional for the installation, maintenance, repair, or any other servicing needs associated with the product. The user understands and assumes full responsibility for hiring a professional with the requisite skills, knowledge, and qualifications to service your product. This includes, but is not limited to, tasks such as installation, repairs, modifications, or any other service required. TheTford disclaims any and all liability for any damages, losses, injuries, or other adverse consequences that may result from the user's failure to hire a qualified professional for the servicing of your product. The user acknowledges the importance of ensuring that the hired professional adheres to industry standards, guidelines, and local regulations applicable to the servicing of your product. TheTford is not responsible for the actions, omissions, or negligence of the hired professional. The user agrees to indemnify and hold harmless TheTford from any claims, liabilities, damages, costs, or expenses, including legal fees, arising from the user's decision to hire, or not hire, a professional for the servicing of the product. By using your product, the user affirms that they have read, understood, and voluntarily agreed to this disclaimer.

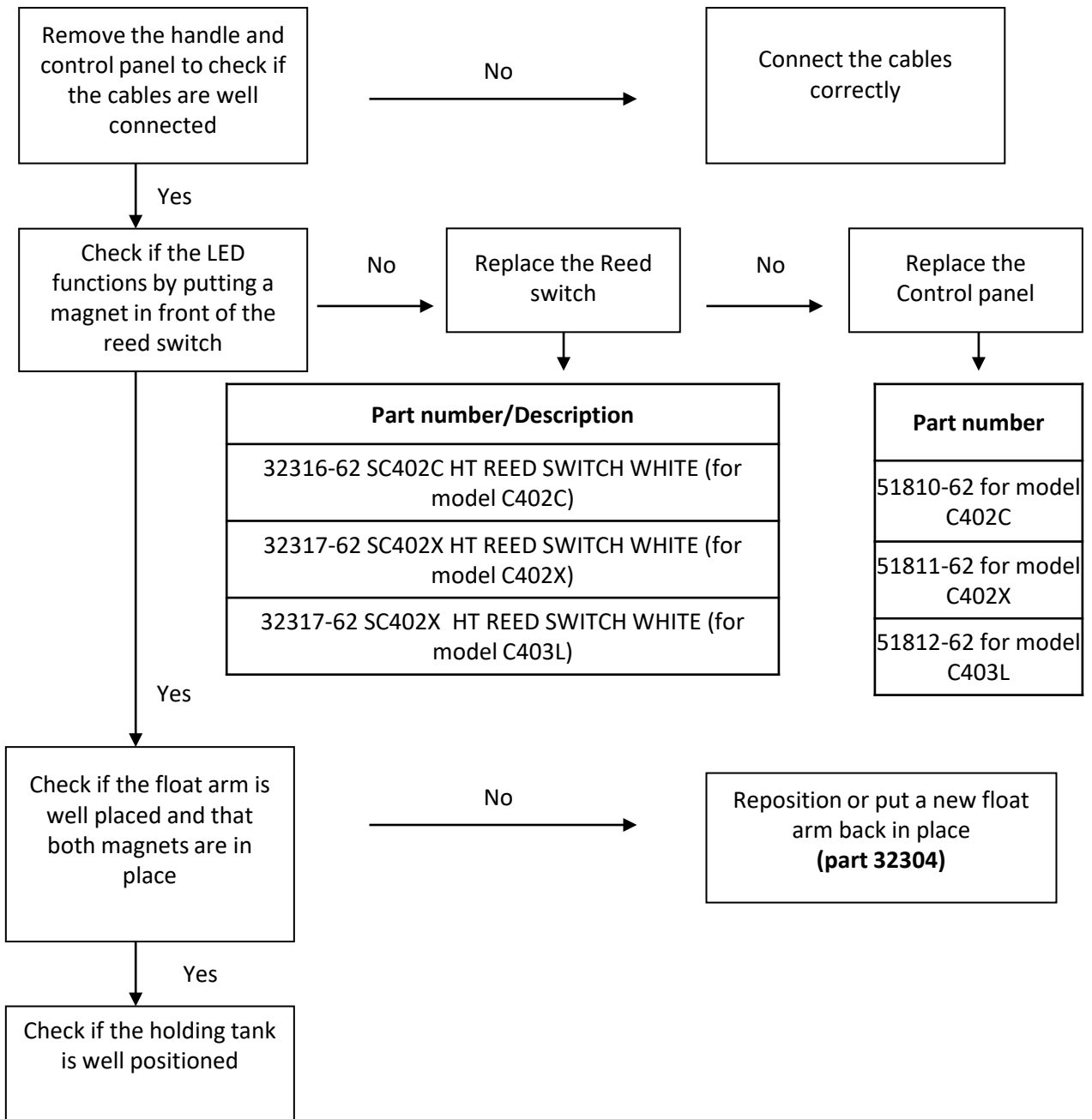
No Flush C402X



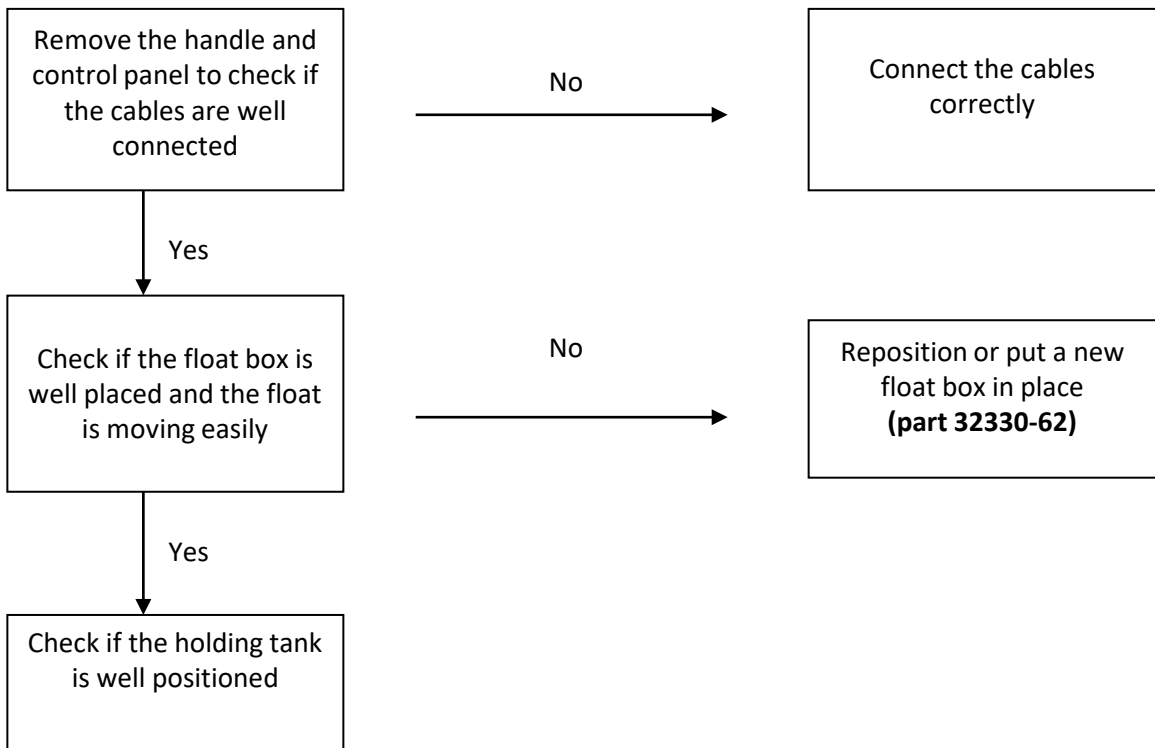
Before starting, check if the toilet is well connected see the 12V connection scheme



No level indication of the C400 Holding Tank

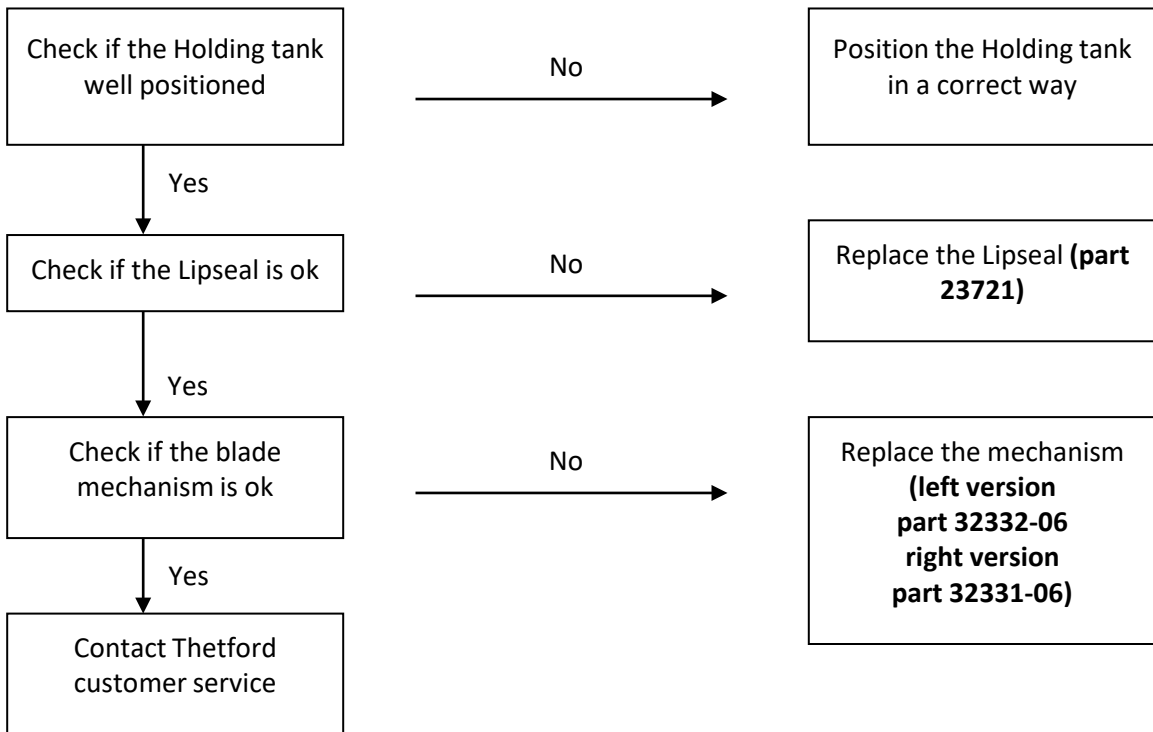


No level indication of the C402X Water tank

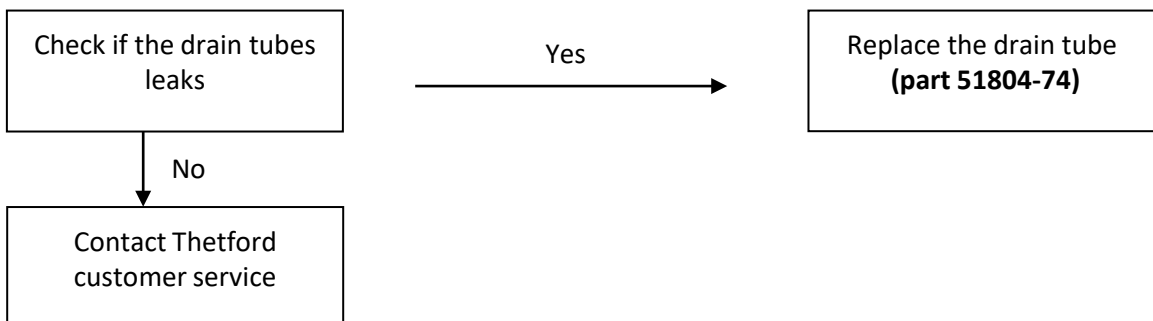


Leakages

➤ Leakage between the bowl and the Holding tank



➤ Leakage at the Water tank



Leakages

➤ Leakage at the Holding tank

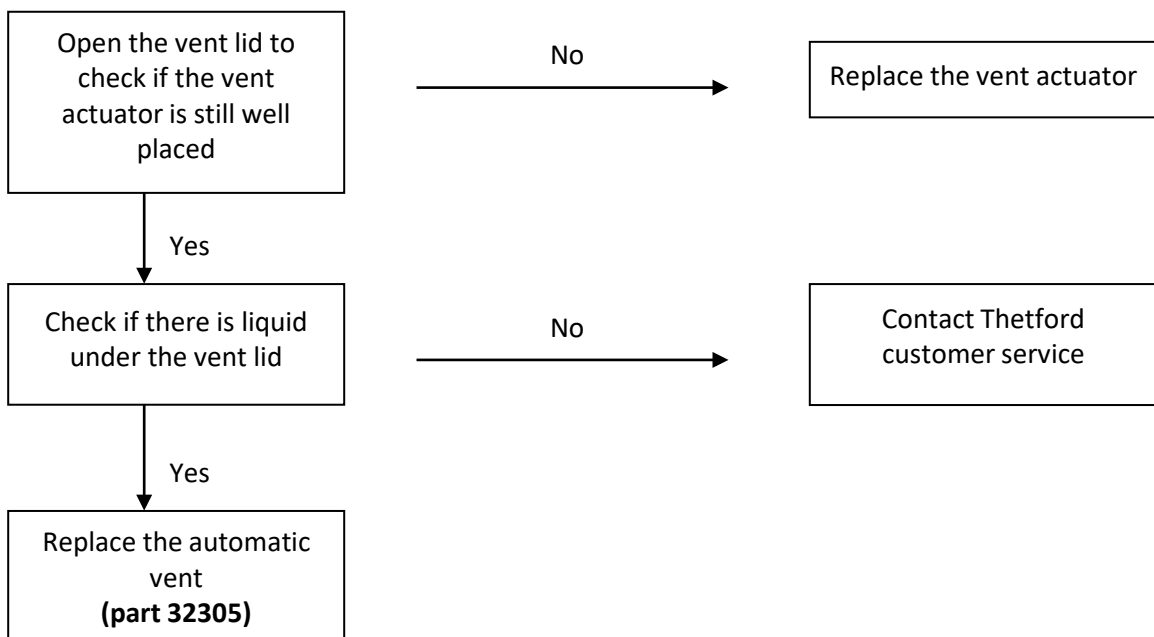
- Leakage at the vent button

Replace the vent button
(part 32307-16)

- Leakage at the pour out spout

Replace the pour out
spout
(part 32306-06)

- Leakage at the vent lid





IMPORTANT INFORMATION

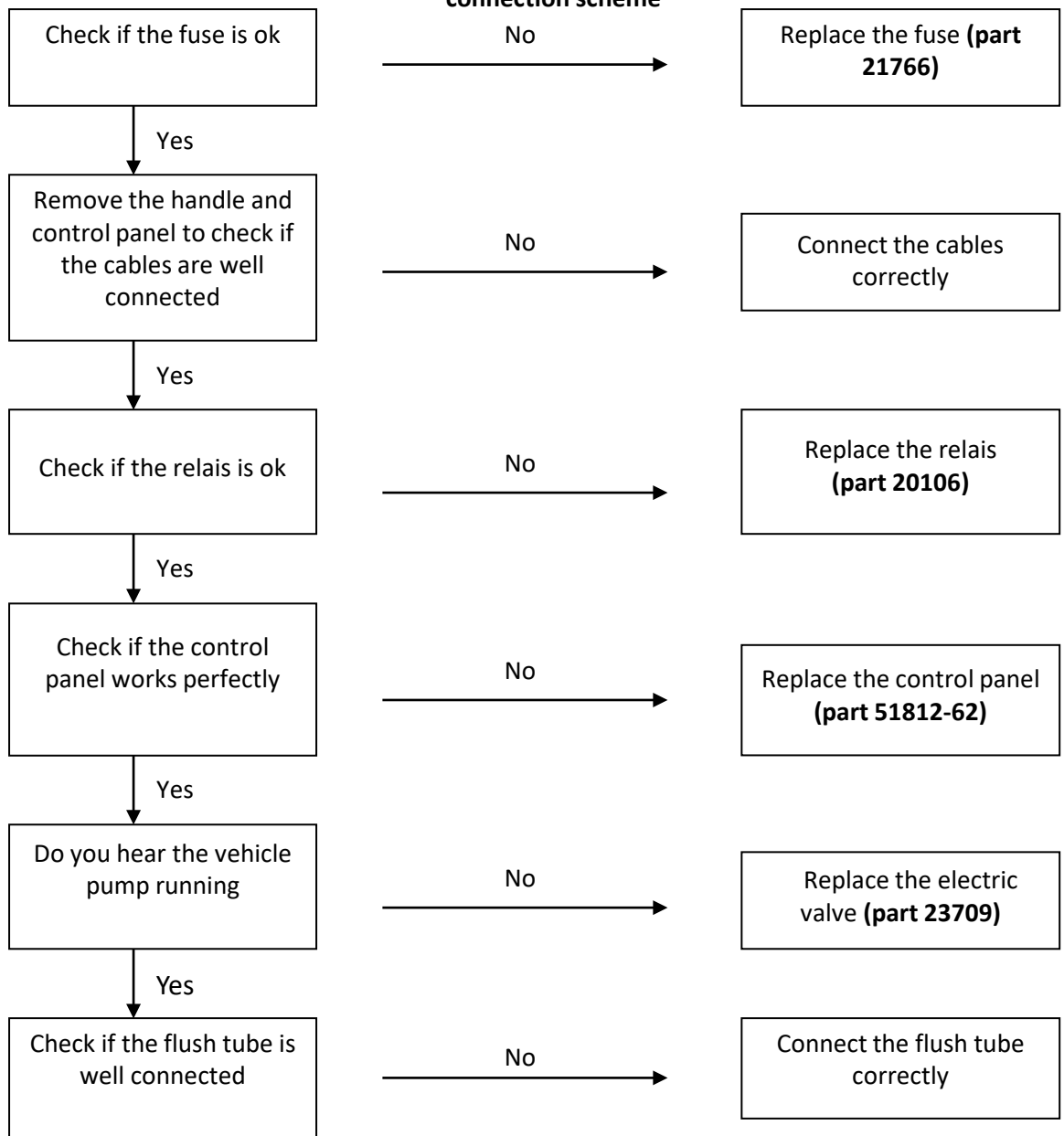
DISCLAIMER

Thetford recommends and strongly advises users to engage the services of a qualified and licensed professional for the installation, maintenance, repair, or any other servicing needs associated with the product. The user understands and assumes full responsibility for hiring a professional with the requisite skills, knowledge, and qualifications to service your product. This includes, but is not limited to, tasks such as installation, repairs, modifications, or any other service required. Thetford disclaims any and all liability for any damages, losses, injuries, or other adverse consequences that may result from the user's failure to hire a qualified professional for the servicing of your product. The user acknowledges the importance of ensuring that the hired professional adheres to industry standards, guidelines, and local regulations applicable to the servicing of your product. Thetford is not responsible for the actions, omissions, or negligence of the hired professional. The user agrees to indemnify and hold harmless Thetford from any claims, liabilities, damages, costs, or expenses, including legal fees, arising from the user's decision to hire, or not hire, a professional for the servicing of the product. By using your product, the user affirms that they have read, understood, and voluntarily agreed to this disclaimer.

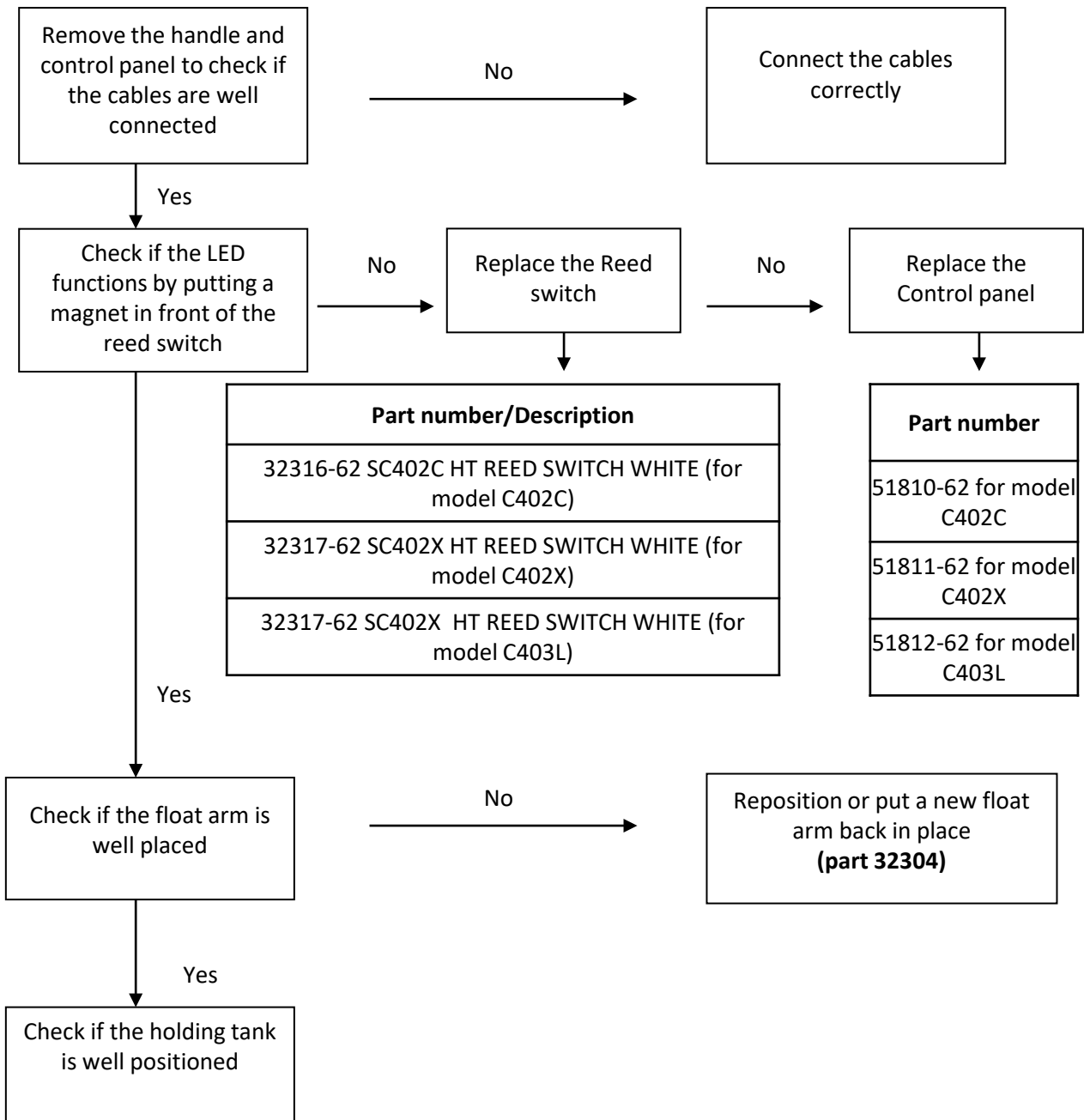
No Flush C403L



Before starting, check if the toilet is well connected, water is available and the vehicle pump is working well. See the 12V connection scheme

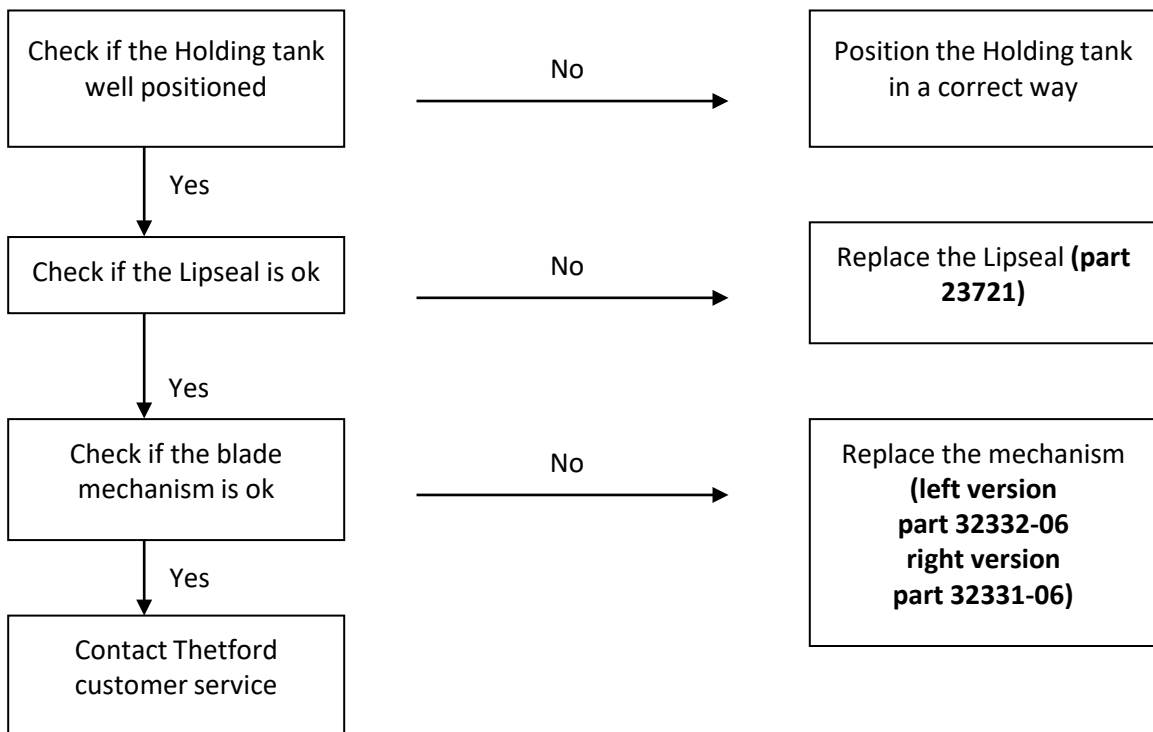


No level indication of the C400 Holding Tank



Leakages

➤ **Leakage between the bowl and the Holding tank**



Leakages

➤ Leakage at the Holding tank

- Leakage at the vent button

Replace the vent button
(part 32307-16)

- Leakage at the pour out spout

Replace the pour out
spout
(part 32306-06)

- Leakage at the vent lid

