



Troubleshooting

IMPORTANT INFORMATION

DISCLAIMER

Thetford recommends and strongly advises users to engage the services of a qualified and licensed professional for the installation, maintenance, repair, or any other servicing needs associated with the product. The user understands and assumes full responsibility for hiring a professional with the requisite skills, knowledge, and qualifications to service your product. This includes, but is not limited to, tasks such as installation, repairs, modifications, or any other service required. Thetford disclaims any and all liability for any damages, losses, injuries, or other adverse consequences that may result from the user's failure to hire a qualified professional for the servicing of your product. The user acknowledges the importance of ensuring that the hired professional adheres to industry standards, guidelines, and local regulations applicable to the servicing of your product. Thetford is not responsible for the actions, omissions, or negligence of the hired professional. The user agrees to indemnify and hold harmless Thetford from any claims, liabilities, damages, costs, or expenses, including legal fees, arising from the user's decision to hire, or not hire, a professional for the servicing of the product. By using your product, the user affirms that they have read, understood, and voluntarily agreed to this disclaimer.

Troubleshooting

TOILETS

CASSETTE TOILETS

C500

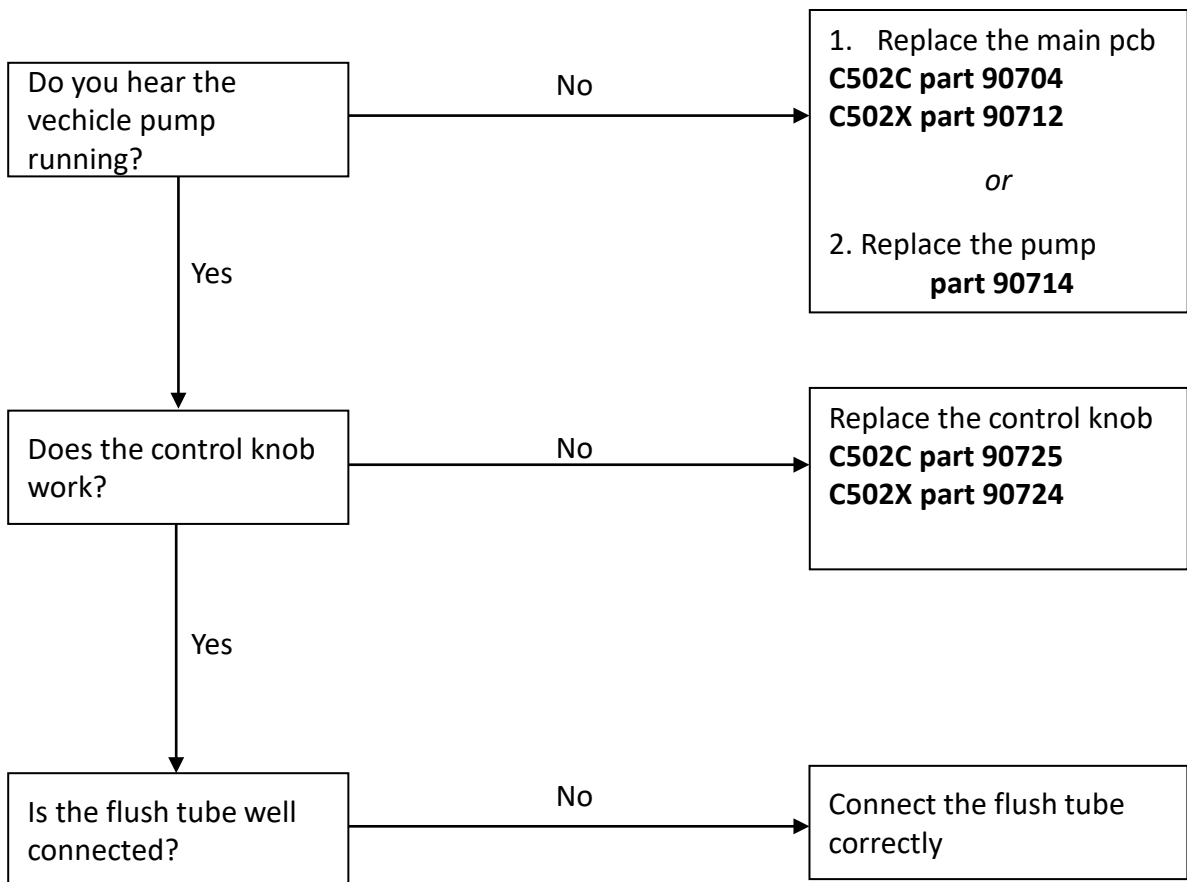
No flush C502C/X



Before starting:

Check if toilet is connected correctly

(see 12V connection scheme in installation manual)



Troubleshooting

TOILETS

CASSETTE TOILETS

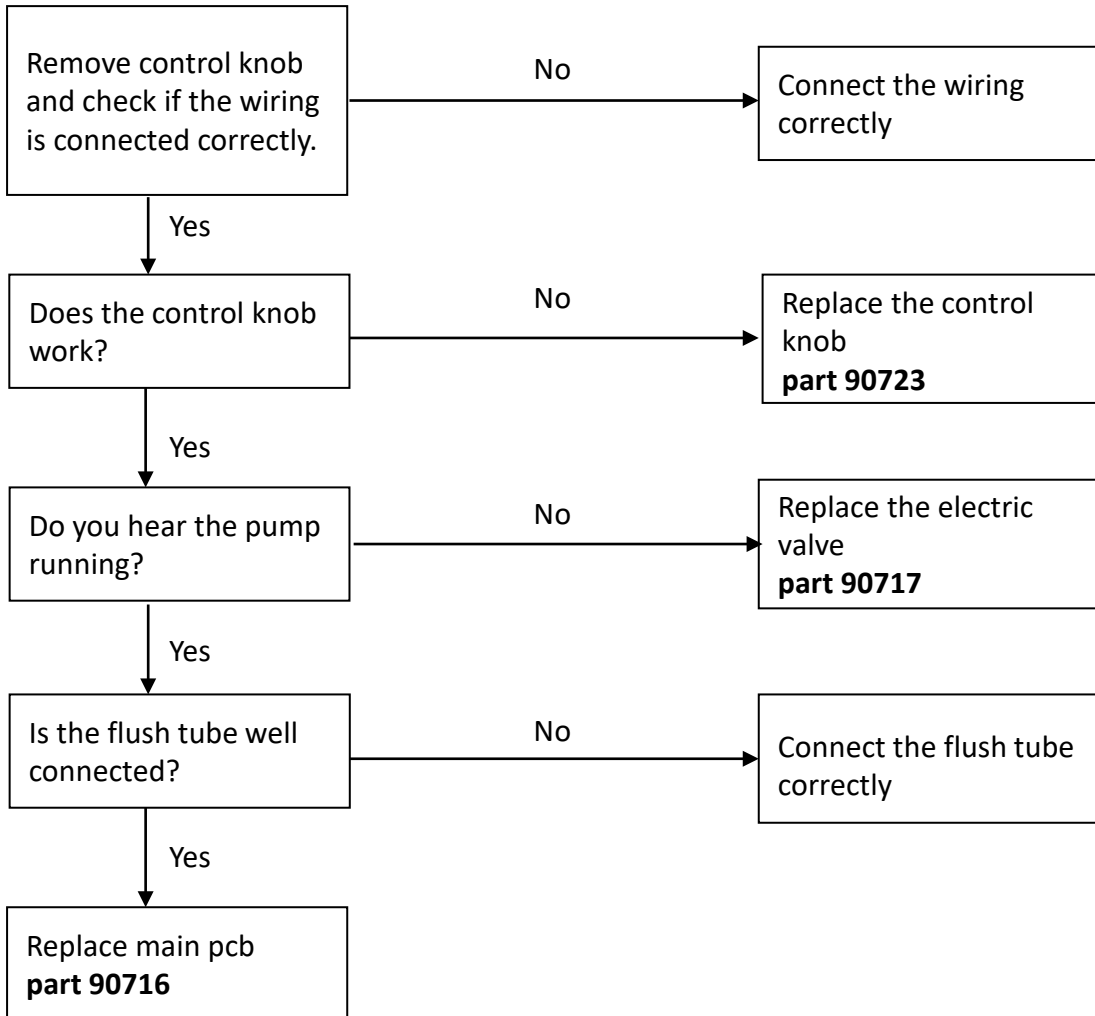
C500

No flush C503L

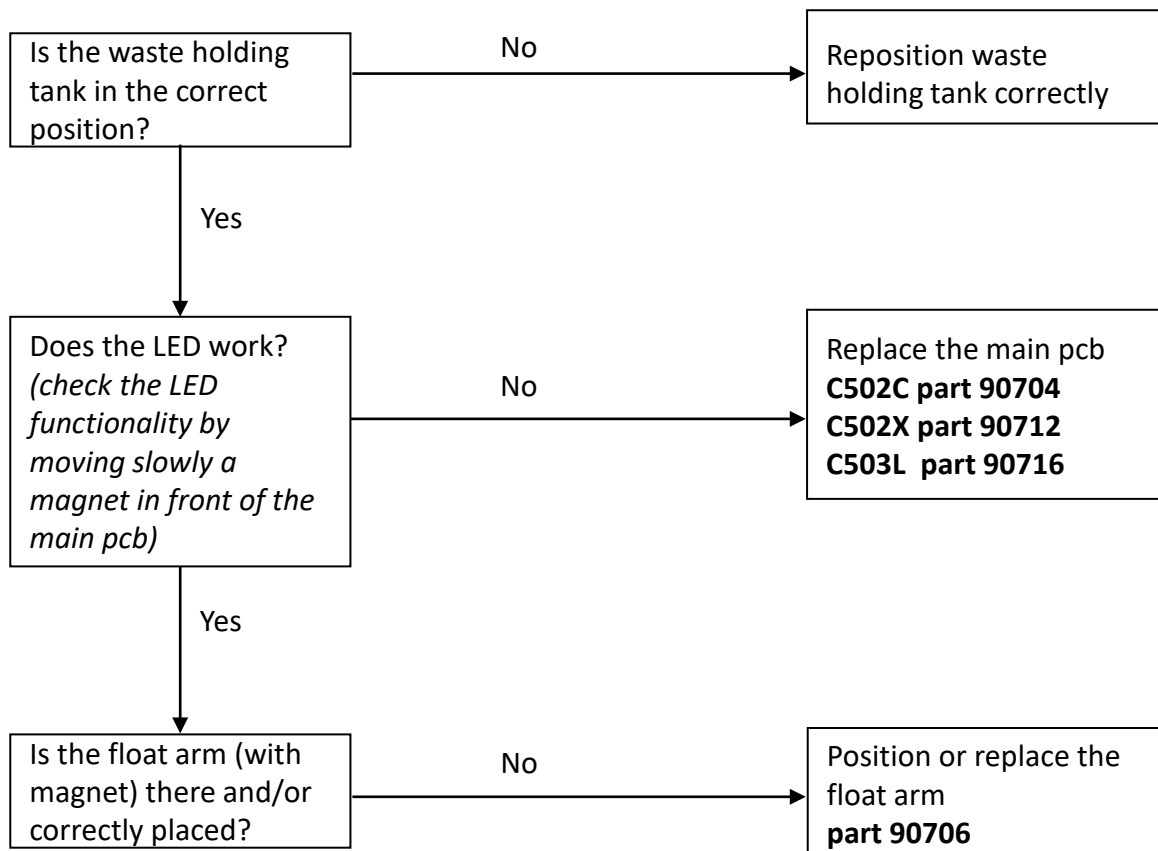


Before starting:

1. Check if the toilet is connected correctly
(see 12v connection scheme in installation manual)
2. Check if there is water supply
3. Check if the water pump of the vehicle works properly

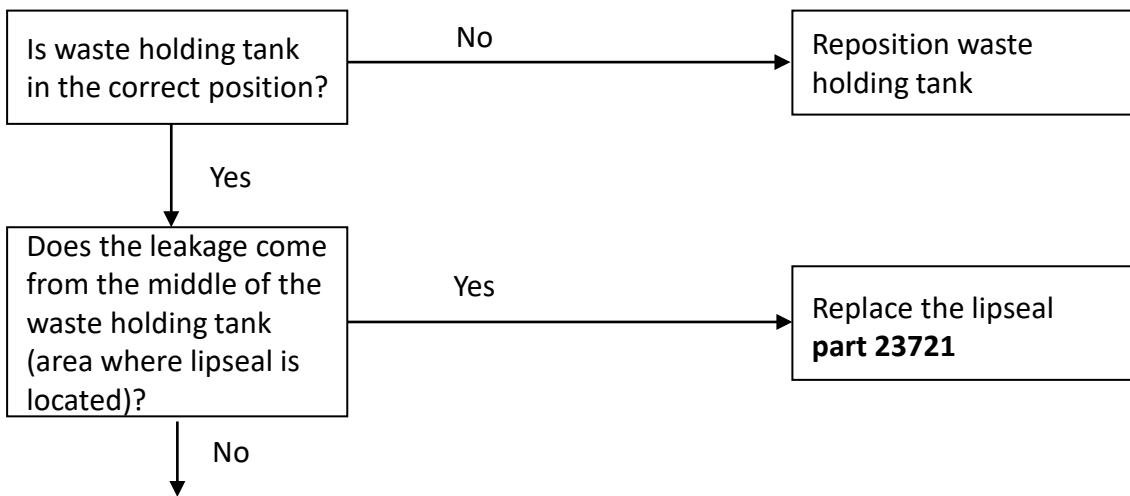


No level indication of the waste holding tank



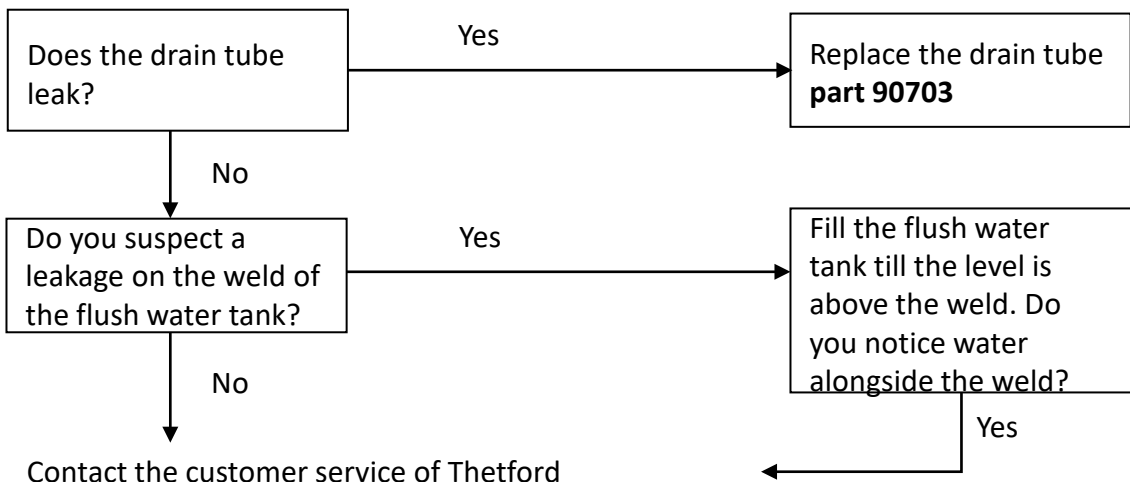
Leakage – 1/2

A. Leakage between the toilet bowl and waste holding tank



Contact the customer service of Thetford

B. Leakage from flush water tank (models C502-C/X)



Leakage - 2/2

C. Leakage from waste holding tank



Before starting:

1. Fill waste holding tank fully and plate it on one side (small side)
2. Remove the sliding cover
3. Check where water is coming from

C1. Leakage from the vent button

Replace the vent button
part **3230716**

C2. Leakage at the pour out spout

Replace the pour out
spout
part **3230606**

C3. Leakage at the automatic vent

