

Repair instruction

Description: SPP Level indicator FWT Excellence	
Part number: 92405-111/60/130/135	
Look for Service Centres, Point of Sale addresses and other information on: www.thetford-europe.com	
Version:	1
Date:	January 2012
	—

A

Open outercase, put plastic on the side and pull seat & cover off.



B

Place flat screwdriver under level indicator, lift it up and take complete level indicator out.



C

Place new level indicator, press it in and place seat & cover back.



Note: it can happen that only the cover of the level indicator comes loose, use a nose plier to pull out the rest of the level indicator.



Repair instruction

Description: SPP Level indicator Qube and Excellence

Part number: 92909-.. / 92908-.. / 92410-..

Look for Service Centres, Point of Sale addresses and other information on: www.thetford-europe.com

Version:	1
Date:	March 2012
Tools required:	Flat screwdriver



A

Place carefully a flat screwdriver underneath the cover, lift it up and push with you're thumb the cover forwards.



B

Dial with maget can be taken out.



Place new level indicator in reverse steps.

Repair instruction

Description: SPP Electric Pump Excellence

Part number: 92402-07/135

Look for Service Centres, Point of Sale addresses and other information on: www.thetford-europe.com

Version:	1
Date:	March 2012
Tools required:	Flat screwdriver

A

Remove seat & cover



B

Turn battery housing and remove from pump housing.



C

Place flat screwdriver in holes pump housing, turn housing and pull housing out of the water tank.



D

Pull flush tube off and place new pump in reverse steps.



Note: when placing the battery housing, make sure that the block mark is on indicated place.

Repair instruction

Description: SPP Piston Pump Excellence/Qube
Part number: 92401-66/111/130, 92901-66/111/130
Look for Service Centres, Point of Sale addresses and other information on: www.thetford-europe.com

Version:	1
Date:	March 2012
Tools required:	Flat screwdriver

A

Remove seat & cover



B

Place carefully flat screwdriver under pump housing and lift it up.



C

Pull flush tube off and place new pump in reverse steps.



Repair instruction

Description: SPP Lip seal

Part number: 07101

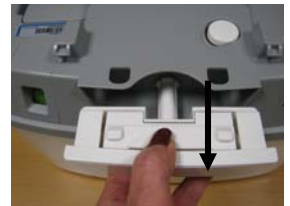
Look for Service Centres, Point of Sale addresses and other information on: www.thetford-europe.com

Version:	1
Date:	January 2012
Tools required:	Nose plier



A

Push the handle in to open the waste holding tank.



B

Pull the lip seal out of the inside groove with help of the nose plier.



C

Push the new lip seal into the inside groove.



D

When lip seal is on its place, close the handle.



Repair instruction

Description: SPP Pour out Spout Qube and Excellence

Part number: 92907-.. / 92408-..

Look for Service Centres, Point of Sale addresses and other information on: www.thetford-europe.com

Version:	1
Date:	January 2012
Tools required:	

A

Turn the pour out spout and pull it out.



B

Press new pour out spout in and turn it back in position.



Repair instruction

Description: SPP Vent button

Part number: 92407-111

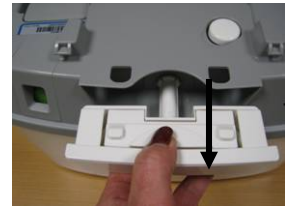
Look for Service Centres, Point of Sale addresses and other information on: www.thetford-europe.com

Version:	1
Date:	January 2012
Tools required:	



A

Push the handle in to open the waste holding tank.



B

Press the vent button in and pull on the inside of the waste holding tank the vent button seal loose.



C

Place new vent button seal and press new vent button onto the seal



Repair instruction

Description: SPP Vent seal

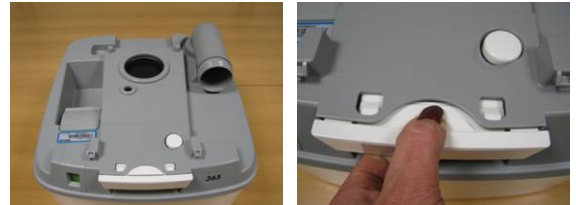
Part number: 07102

Look for Service Centres, Point of Sale addresses and other information on: www.thetford-europe.com

Version:	1
Date:	January 2012
Tools required:	Nose plier

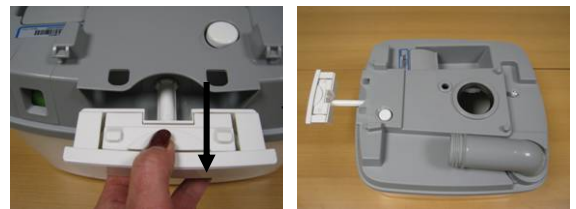
A

Push the handle in, to open the waste holding tank.



B

Push the vent seal loose of the inside groove and pull it out with help of the nose plier.



C

By squeezing the new vent seal, it can be pushed through the hole.



D

Hold vent seal in position with the nose plier while closing the handle slowly. This will press the vent seal back in its groove.



Repair instruction

TOILETS
PORTABLE TOILETS
PORTA POTTI EXCELLENCE

REPAIR KIT FLUSH TUBE PP EXCELLENCE ELECTRIC 92416

A Remove the small cover to lift the seat en cover of the toilet



B Turn the knob to the left



C Use a screwdriver to make a turn to the left.
Now you can lift the pump.



D Unpack the sparepart 92416



Repair instruction

E

Measure the flushtube to the same length as the spare part



F

Cut the flushtube with the scissors
According the picture



G

Put the shrinktube over the
flushtube



H

Put the spare flushtube(80mm)
into the flushtube.Same height as
on the picture.appr 25 mm



Repair instruction

I

Melt the shrinktube with a blow dryer.
Let it cool down for at least 5 minutes



J

Put the flushtube back on the pump and place the pump back in the hole



K

Use a screwdriver to turn the pump housing to the right



L

Place the knob back and turn to the right



Repair instruction

M

Put the seat en cover back on the toilet

