

## Repair instruction

<b>Description: SPP Level indicator FWT Excellence</b>	
<b>Part number: 92405-111/60/130/135</b>	
Look for Service Centres, Point of Sale addresses and other information on: <a href="http://www.thetford-europe.com">www.thetford-europe.com</a>	
<b>Version:</b>	1
<b>Date:</b>	January 2012
	—

**A**

Open outercase, put plastic on the side and pull seat & cover off.



**B**

Place flat screwdriver under level indicator, lift it up and take complete level indicator out.



**C**

Place new level indicator, press it in and place seat & cover back.



Note: it can happen that only the cover of the level indicator comes loose, use a nose plier to pull out the rest of the level indicator.



## Repair instruction

**Description:** SPP Level indicator Qube and Excellence

**Part number:** 92909-.. / 92908-.. / 92410-..

**Look for Service Centres, Point of Sale addresses and other information on:** [www.thetford-europe.com](http://www.thetford-europe.com)

<b>Version:</b>	1
<b>Date:</b>	March 2012
<b>Tools required:</b>	Flat screwdriver



**A**

Place carefully a flat screwdriver underneath the cover, lift it up and push with you're thumb the cover forwards.



**B**

Dial with maget can be taken out.



Place new level indicator in reverse steps.

## Repair instruction

**Description: SPP Electric Pump Excellence**

**Part number: 92402-07/135**

**Look for Service Centres, Point of Sale addresses and other information on: [www.thetford-europe.com](http://www.thetford-europe.com)**

<b>Version:</b>	1
<b>Date:</b>	March 2012
<b>Tools required:</b>	Flat screwdriver

**A**

Remove seat & cover



**B**

Turn battery housing and remove from pump housing.



**C**

Place flat screwdriver in holes pump housing, turn housing and pull housing out of the water tank.



**D**

Pull flush tube off and place new pump in reverse steps.



Note: when placing the battery housing, make sure that the block mark is on indicated place.

## Repair instruction

**Description:** SPP Piston Pump Excellence/Qube  
**Part number:** 92401-66/111/130, 92901-66/111/130  
**Look for Service Centres, Point of Sale addresses and other information on:** [www.thetford-europe.com](http://www.thetford-europe.com)

<b>Version:</b>	1
<b>Date:</b>	March 2012
<b>Tools required:</b>	Flat screwdriver

A

Remove seat & cover



B

Place carefully flat screwdriver under pump housing and lift it up.



C

Pull flush tube off and place new pump in reverse steps.



## Repair instruction

**Description: SPP Lip seal**

**Part number: 07101**

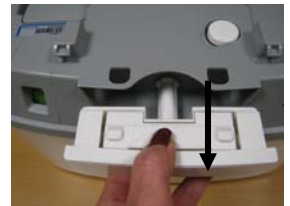
Look for Service Centres, Point of Sale addresses and other information on: [www.thetford-europe.com](http://www.thetford-europe.com)

<b>Version:</b>	1
<b>Date:</b>	January 2012
<b>Tools required:</b>	Nose plier



**A**

Push the handle in to open the waste holding tank.



**B**

Pull the lip seal out of the inside groove with help of the nose plier.



**C**

Push the new lip seal into the inside groove.



**D**

When lip seal is on its place, close the handle.



## Repair instruction

**Description: SPP Pour out Spout Qube and Excellence**

**Part number: 92907-.. / 92408-..**

**Look for Service Centres, Point of Sale addresses and other information on: [www.thetford-europe.com](http://www.thetford-europe.com)**

<b>Version:</b>	1
<b>Date:</b>	January 2012
<b>Tools required:</b>	

**A**

Turn the pour out spout and pull it out.



**B**

Press new pour out spout in and turn it back in position.



## Repair instruction

**Description: SPP Vent button**

**Part number: 92407-111**

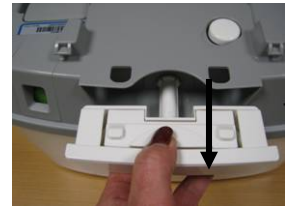
Look for Service Centres, Point of Sale addresses and other information on: [www.thetford-europe.com](http://www.thetford-europe.com)

<b>Version:</b>	1
<b>Date:</b>	January 2012
<b>Tools required:</b>	



**A**

Push the handle in to open the waste holding tank.



**B**

Press the vent button in and pull on the inside of the waste holding tank the vent button seal loose.



**C**

Place new vent button seal and press new vent button onto the seal



## Repair instruction

**Description: SPP Vent seal**

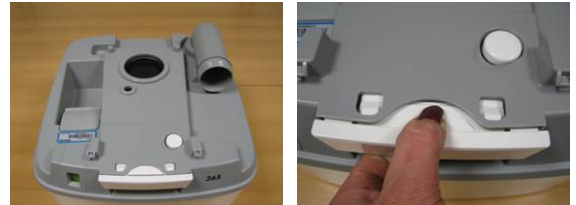
**Part number: 07102**

Look for Service Centres, Point of Sale addresses and other information on: [www.thetford-europe.com](http://www.thetford-europe.com)

<b>Version:</b>	1
<b>Date:</b>	January 2012
<b>Tools required:</b>	Nose plier

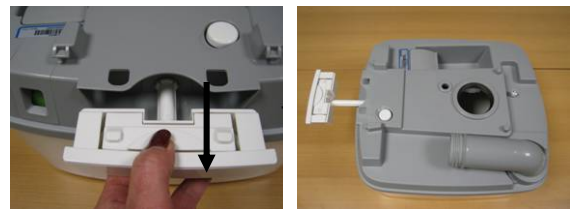
**A**

Push the handle in, to open the waste holding tank.



**B**

Push the vent seal loose of the inside groove and pull it out with help of the nose plier.



**C**

By squeezing the new vent seal, it can be pushed through the hole.



**D**

Hold vent seal in position with the nose plier while closing the handle slowly. This will press the vent seal back in its groove.





## Repair instruction

TOILETS  
PORTABLE TOILETS  
PORTA POTTI EXCELLENCE

### REPAIR KIT FLUSH TUBE PP EXCELLENCE ELECTRIC 92416

---

A

Remove the small cover to lift the seat en cover of the toilet



B

Turn the knob to the left



C

Use a screwdriver to make a turn to the left.  
Now you can lift the pump.



D

Unpack the sparepart 92416



## Repair instruction

E

Measure the flushtube to the same length as the spare part



F

Cut the flushtube with the scissors  
According the picture



G

Put the shrinktube over the  
flushtube



H

Put the spare flushtube(80mm)  
into the flushtube.Same height as  
on the picture.appr 25 mm



## Repair instruction

I

Melt the shrinktube with a blow dryer.  
Let it cool down for at least 5 minutes



J

Put the flushtube back on the pump and place the pump back in the hole



K

Use a screwdriver to turn the pump housing to the right



L

Place the knob back and turn to the right



## Repair instruction

M

Put the seat en cover back on the toilet

